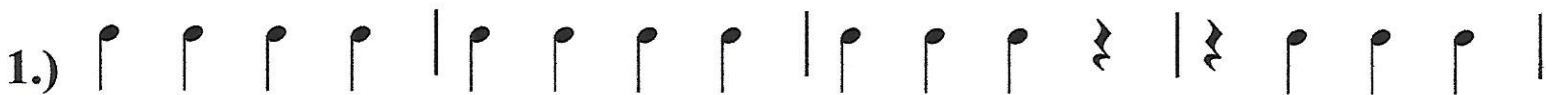


# BEGINNING BAND WARM-UPS

Percussion

Student's Name \_\_\_\_\_

## Warm-Up 1A

1.) 



2.) 



3.) 



4.) 

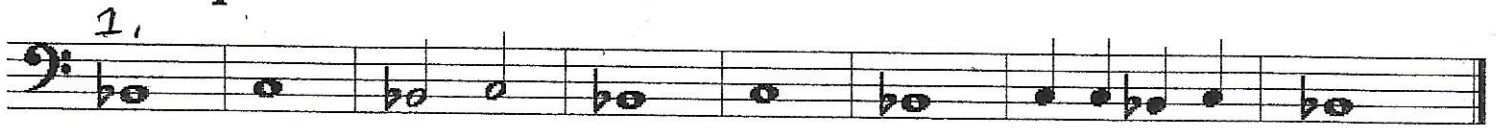


# BEGINNING BAND WARM-UPS

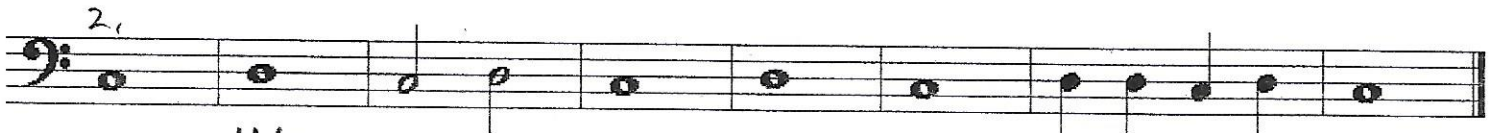
Trombone/Baritone

Student's Name \_\_\_\_\_


## Warm-Up 1A

1.  


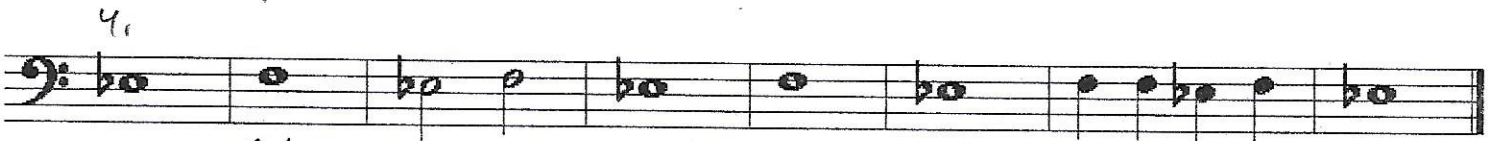
1/000 6/000

2.  


4/000

3.  


3/000

4.  


1/000

## Warm-Up 1B

5.  


6.  


7.  


8.  

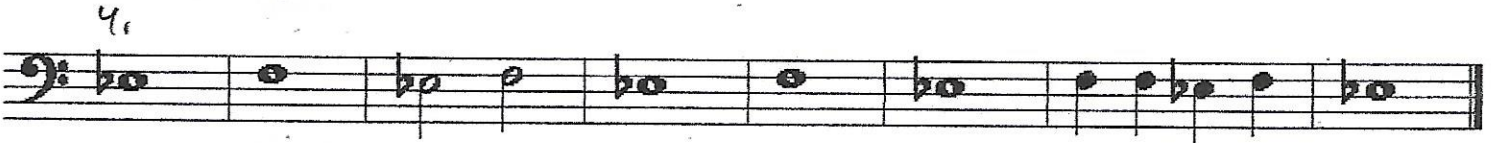

9.  


# BEGINNING BAND WARM-UPS

Bassoon (see fingering chart)

Student's Name \_\_\_\_\_

## Warm-Up 1A



## Warm-Up 1B



# BEGINNING BAND WARM-UPS

Bb Tenor Sax

Student's Name \_\_\_\_\_

## Warm-Up 1A

Musical notation for Warm-Up 1A, measures 1 through 4. Each measure is on a single staff with a treble clef and a key signature of one flat (Bb). The notes are as follows:

- Measure 1: G4, A4, Bb4, C5, Bb4, A4, G4
- Measure 2: G4, A4, Bb4, C5, Bb4, A4, G4
- Measure 3: G4, A4, Bb4, C5, Bb4, A4, G4
- Measure 4: G4, A4, Bb4, C5, Bb4, A4, G4

Handwritten annotations include arrows pointing to the first note of each measure and a vertical line of dots on the right side of the first staff.

## Warm-Up 1B

Musical notation for Warm-Up 1B, measures 5 through 9. Each measure is on a single staff with a treble clef and a key signature of one flat (Bb). The notes are as follows:

- Measure 5: G4, A4, Bb4, C5, Bb4, A4, G4
- Measure 6: G4, A4, Bb4, C5, Bb4, A4, G4
- Measure 7: G4, A4, Bb4, C5, Bb4, A4, G4
- Measure 8: G4, A4, Bb4, C5, Bb4, A4, G4
- Measure 9: G4, A4, Bb4, C5, Bb4, A4, G4

Handwritten annotations include arrows pointing to the first note of each measure.

# WARMUP 1B

Percussion

1.

Exercise 1 consists of four measures of music. The first measure starts with a common time signature 'C'. The notation is written on a five-line staff with a treble clef. The melody is composed of eighth and quarter notes, while the bass line consists of quarter notes. The second measure continues the melody with eighth notes and quarter notes. The third measure features a more complex melody with eighth notes and quarter notes. The fourth measure concludes the exercise with a final chord and a double bar line.

2.

Exercise 2 consists of four measures of music. The notation is written on a five-line staff with a treble clef. The melody is composed of eighth and quarter notes, while the bass line consists of quarter notes. The first measure starts with a quarter rest followed by eighth notes. The second measure continues the melody with eighth notes and quarter notes. The third measure features a more complex melody with eighth notes and quarter notes. The fourth measure concludes the exercise with a final chord and a double bar line.

3.

Exercise 3 consists of four measures of music. The notation is written on a five-line staff with a treble clef. The melody is composed of eighth and quarter notes, while the bass line consists of quarter notes. The first measure starts with a quarter rest followed by eighth notes. The second measure continues the melody with eighth notes and quarter notes. The third measure features a more complex melody with eighth notes and quarter notes. The fourth measure concludes the exercise with a final chord and a double bar line.

4.

Exercise 4 consists of four measures of music. The notation is written on a five-line staff with a treble clef. The melody is composed of eighth and quarter notes, while the bass line consists of quarter notes. The first measure starts with a quarter rest followed by eighth notes. The second measure continues the melody with eighth notes and quarter notes. The third measure features a more complex melody with eighth notes and quarter notes. The fourth measure concludes the exercise with a final chord and a double bar line.

5.

Exercise 5 consists of four measures of music. The notation is written on a five-line staff with a treble clef. The melody is composed of eighth and quarter notes, while the bass line consists of quarter notes. The first measure starts with a quarter rest followed by eighth notes. The second measure continues the melody with eighth notes and quarter notes. The third measure features a more complex melody with eighth notes and quarter notes. The fourth measure concludes the exercise with a final chord and a double bar line.

*Moore*

# WARM UP 1B

Percussion

5.)

Exercise 5 consists of two staves of music. The top staff is in treble clef with a common time signature (C). It features a rhythmic pattern of eighth and sixteenth notes with accents. The bottom staff is in bass clef and provides a harmonic accompaniment with quarter notes and eighth notes.

6.)

Exercise 6 consists of two staves of music. The top staff is in treble clef with a common time signature (C). It features a rhythmic pattern of eighth and sixteenth notes with accents. The bottom staff is in bass clef and provides a harmonic accompaniment with quarter notes and eighth notes.

7.)

Exercise 7 consists of two staves of music. The top staff is in treble clef with a common time signature (C). It features a rhythmic pattern of eighth and sixteenth notes with accents. The bottom staff is in bass clef and provides a harmonic accompaniment with quarter notes and eighth notes.

8.)

Exercise 8 consists of two staves of music. The top staff is in treble clef with a common time signature (C). It features a rhythmic pattern of eighth and sixteenth notes with accents. The bottom staff is in bass clef and provides a harmonic accompaniment with quarter notes and eighth notes.

9.)

Exercise 9 consists of two staves of music. The top staff is in treble clef with a common time signature (C). It features a rhythmic pattern of eighth and sixteenth notes with accents. The bottom staff is in bass clef and provides a harmonic accompaniment with quarter notes and eighth notes.

# BEGINNING BAND WARM-UPS

Bb Clarinets

Student's Name \_\_\_\_\_

## Warm-Up 1A



1.

2.

3.

4.

## Warm-Up 1B

5.

6.

7.

8.

9.





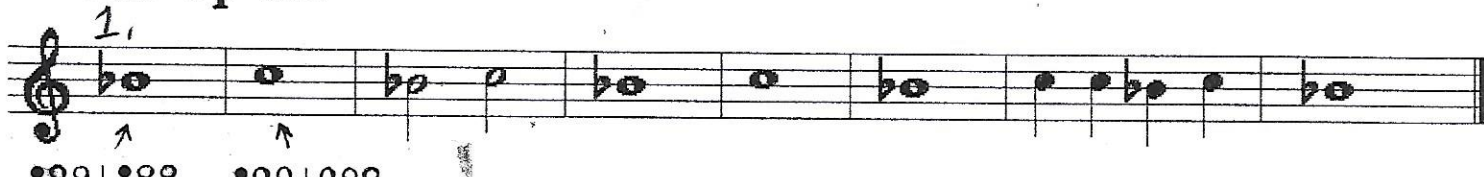
# BEGINNING BAND WARM-UPS

C Flute/Mallets

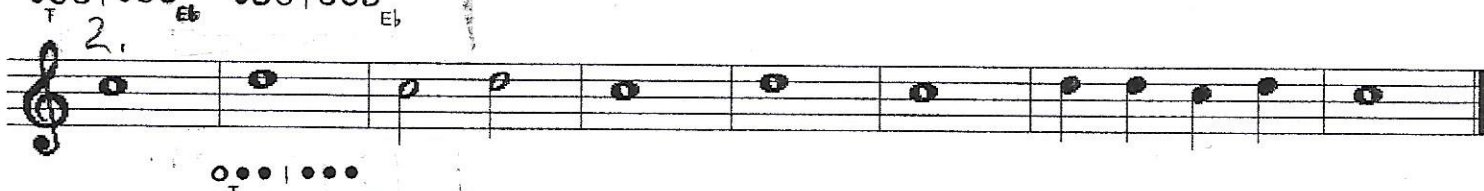
Student's Name \_\_\_\_\_

## Warm-Up 1A


1.



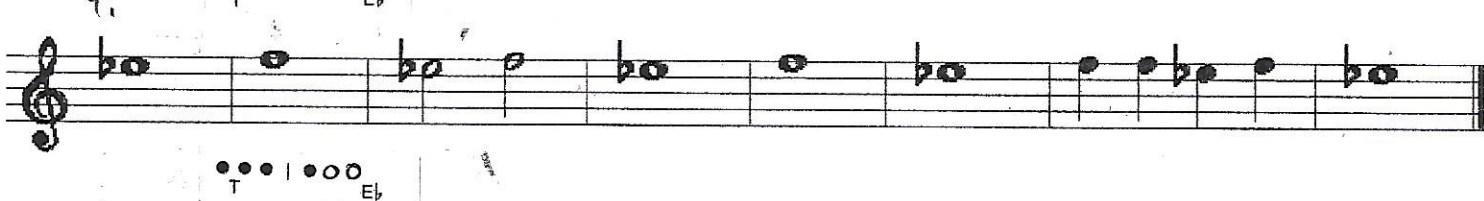
2.



3.



4.



## Warm-Up 1B

5.



6.



7.



8.



9.



# BEGINNING BAND WARM-UPS

French Horn

Student's Name \_\_\_\_\_

## Warm-Up 1A

1.

2.

3.

4.

## Warm-Up 1B

5.

6.

7.

8.

9.

# BEGINNING BAND WARM-UPS

C Oboe (see fingering chart)

Student's Name \_\_\_\_\_

## Warm-Up 1A

1.

2.

3.

4.

## Warm-Up 1B

5.

6.

7.

8.

9.

# BEGINNING BAND WARM-UPS

Bb Trumpets

Student's Name \_\_\_\_\_

## Warm-Up 1A

1.

2.

3.

4.

## Warm-Up 1B

5.

6.

7.

8.

9.

# BEGINNING BAND WARM-UPS

Tuba

Student's Name \_\_\_\_\_

## Warm-Up 1A

1.

2.

3.

4.

## Warm-Up 1B

5.

6.

7.

8.

9.