

Low Brass

WARM UP V

Name _____

1. Concert Ab Scale

Arpeggio



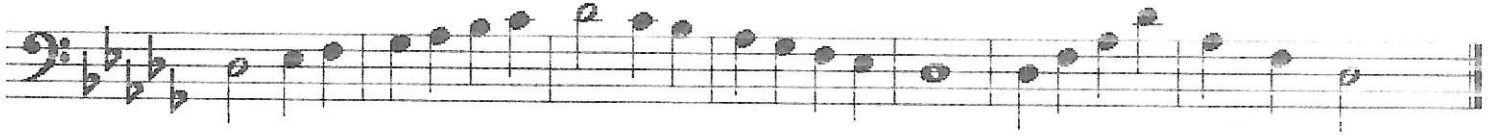
2. Concert Bb Scale



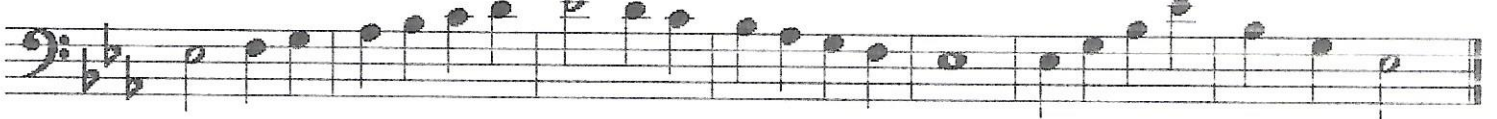
3. Concert C Scale



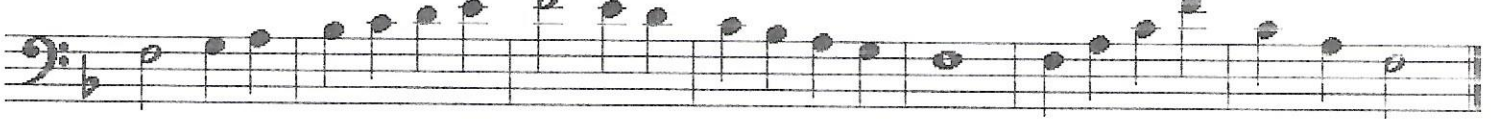
4. Concert Db Scale



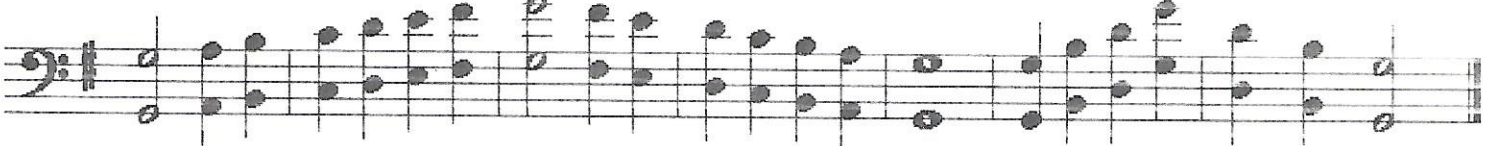
5. Concert Eb Scale



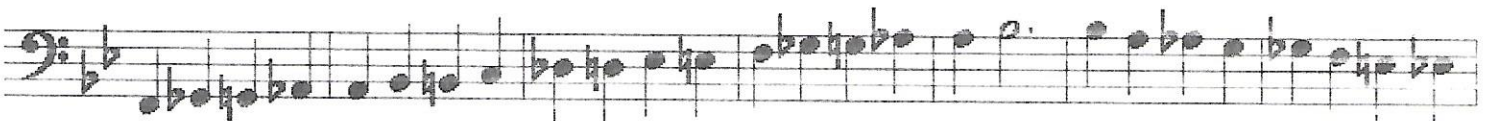
6. Concert F Scale



7. Concert G Scale



8. Chromatic Scale :



9. Range Extention :



1. Concert Ab Scale

The first staff shows the Concert Ab Scale in treble clef. The key signature has two flats (Bb and Eb). The scale is written in a single line with a common time signature 'C'. The word 'Arpeggio' is written in a cursive font above the staff. The scale consists of 12 notes: Ab, Bb, C, D, Eb, F, G, Ab, Bb, C, D, Eb.

2. Concert Bb Scale

The second staff shows the Concert Bb Scale in treble clef. The key signature has two flats (Bb and Eb). The scale is written in a single line with a common time signature 'C'. The scale consists of 12 notes: Bb, C, D, Eb, F, G, Ab, Bb, C, D, Eb, F.

3. Concert C Scale

The third staff shows the Concert C Scale in treble clef. The key signature has no sharps or flats. The scale is written in a single line with a common time signature 'C'. The scale consists of 12 notes: C, D, Eb, F, G, Ab, Bb, C, D, Eb, F, G.

4. Concert Db Scale

The fourth staff shows the Concert Db Scale in treble clef. The key signature has three flats (Bb, Eb, and Ab). The scale is written in a single line with a common time signature 'C'. The scale consists of 12 notes: Db, Eb, F, G, Ab, Bb, C, Db, Eb, F, G, Ab.

5. Concert Eb Scale

The fifth staff shows the Concert Eb Scale in treble clef. The key signature has three flats (Bb, Eb, and Ab). The scale is written in a single line with a common time signature 'C'. The scale consists of 12 notes: Eb, F, G, Ab, Bb, C, D, Eb, F, G, Ab, Bb.

6. Concert F Scale

The sixth staff shows the Concert F Scale in treble clef. The key signature has one flat (Bb). The scale is written in a single line with a common time signature 'C'. The scale consists of 12 notes: F, G, Ab, Bb, C, D, Eb, F, G, Ab, Bb, C.

7. Concert G Scale

The seventh staff shows the Concert G Scale in treble clef. The key signature has two sharps (F# and C#). The scale is written in a single line with a common time signature 'C'. The scale consists of 12 notes: G, A, B, C, D, E, F#, G, A, B, C, D.

8. Chromatic Scale :

The eighth staff shows a chromatic scale in treble clef. The key signature has two sharps (F# and C#). The scale is written in a single line with a common time signature 'C'. It consists of 24 notes, ascending and then descending chromatically: G, A, B, C, D, E, F#, G, A, B, C, D, E, F#, G, A, B, C, D, E, F#, G.

9. Range Extention :

The ninth staff shows a range extension exercise in treble clef. The key signature has two sharps (F# and C#). The scale is written in a single line with a common time signature 'C'. It consists of 24 notes, ascending and then descending chromatically, with a double bar line in the middle: G, A, B, C, D, E, F#, G, A, B, C, D, E, F#, G, A, B, C, D, E, F#, G.

The tenth staff shows a range extension exercise in treble clef. The key signature has two sharps (F# and C#). The scale is written in a single line with a common time signature 'C'. It consists of 24 notes, ascending and then descending chromatically: G, A, B, C, D, E, F#, G, A, B, C, D, E, F#, G, A, B, C, D, E, F#, G.

C Instruments

WARM UP V

Name _____

1. Concert Ab Scale

Arpeggio

Musical notation for the Concert Ab Scale, starting with a treble clef, a key signature of two flats (Bb and Eb), and a common time signature (C). The scale is written on a single staff with a series of eighth notes ascending and then descending, ending with a final note. The word "Arpeggio" is written above the staff.

2. Concert Bb Scale

Musical notation for the Concert Bb Scale, starting with a treble clef, a key signature of two flats (Bb and Eb), and a common time signature (C). The scale is written on a single staff with a series of eighth notes ascending and then descending, ending with a final note.

3. Concert C Scale

Musical notation for the Concert C Scale, starting with a treble clef, a key signature of one sharp (F#), and a common time signature (C). The scale is written on a single staff with a series of eighth notes ascending and then descending, ending with a final note.

4. Concert Db Scale

Musical notation for the Concert Db Scale, starting with a treble clef, a key signature of three flats (Bb, Eb, and Ab), and a common time signature (C). The scale is written on a single staff with a series of eighth notes ascending and then descending, ending with a final note.

5. Concert Eb Scale

Musical notation for the Concert Eb Scale, starting with a treble clef, a key signature of three flats (Bb, Eb, and Ab), and a common time signature (C). The scale is written on a single staff with a series of eighth notes ascending and then descending, ending with a final note.

6. Concert F Scale

Musical notation for the Concert F Scale, starting with a treble clef, a key signature of one flat (Bb), and a common time signature (C). The scale is written on a single staff with a series of eighth notes ascending and then descending, ending with a final note.

7. Concert G Scale

Musical notation for the Concert G Scale, starting with a treble clef, a key signature of one sharp (F#), and a common time signature (C). The scale is written on a single staff with a series of eighth notes ascending and then descending, ending with a final note.

8. Chromatic Scale :

Musical notation for the Chromatic Scale, starting with a treble clef, a key signature of two flats (Bb and Eb), and a common time signature (C). The scale is written on a single staff with a series of eighth notes ascending and then descending, ending with a final note.

9. Range Extention :

Musical notation for the Range Extention exercise, consisting of two staves. The first staff starts with a treble clef, a key signature of two flats (Bb and Eb), and a common time signature (C). The second staff continues the scale with a series of eighth notes ascending and then descending, ending with a final note.

E♭ Instruments

WARM UP V

Name _____

1. Concert A♭ Scale

Arpeggio



Musical notation for the Concert A♭ Scale in treble clef, 2/4 time. The scale is written in a single line with a common time signature 'C'. The notes are: A♭, B♭, C, D, E♭, F, G, A♭, B♭, C, D, E♭, F, G, A♭, B♭, C. The word 'Arpeggio' is written above the staff.

2. Concert B♭ Scale



Musical notation for the Concert B♭ Scale in treble clef, 2/4 time. The scale is written in a single line with a key signature of two flats (B♭, E♭). The notes are: B♭, C, D, E♭, F, G, A♭, B♭, C, D, E♭, F, G, A♭, B♭, C.

3. Concert C Scale



Musical notation for the Concert C Scale in treble clef, 2/4 time. The scale is written in a single line with a key signature of no sharps or flats. The notes are: C, D, E, F, G, A, B, C, D, E, F, G, A, B, C.

4. Concert D♭ Scale



Musical notation for the Concert D♭ Scale in treble clef, 2/4 time. The scale is written in a single line with a key signature of three flats (B♭, E♭, A♭). The notes are: D♭, E♭, F, G, A♭, B♭, C, D♭, E♭, F, G, A♭, B♭, C, D♭, E♭, F.

5. Concert E♭ Scale



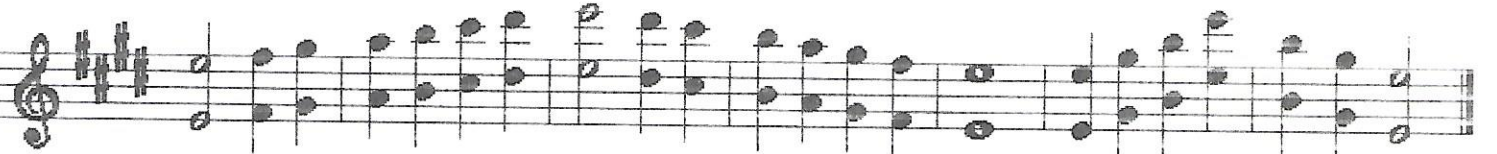
Musical notation for the Concert E♭ Scale in treble clef, 2/4 time. The scale is written in a single line with a key signature of three flats (B♭, E♭, A♭). The notes are: E♭, F, G, A♭, B♭, C, D, E♭, F, G, A♭, B♭, C, D, E♭, F.

6. Concert F Scale



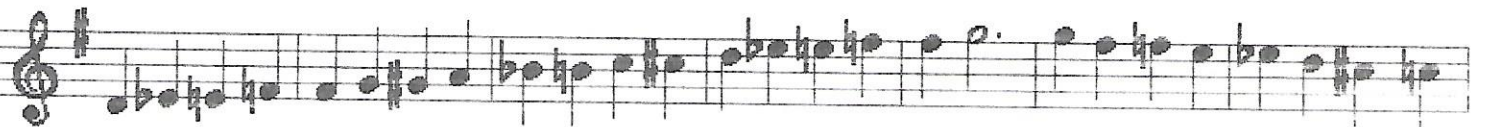
Musical notation for the Concert F Scale in treble clef, 2/4 time. The scale is written in a single line with a key signature of one flat (B♭). The notes are: F, G, A, B♭, C, D, E, F, G, A, B♭, C, D, E, F.

7. Concert G Scale



Musical notation for the Concert G Scale in treble clef, 2/4 time. The scale is written in a single line with a key signature of one sharp (F♯). The notes are: G, A, B, C, D, E, F♯, G, A, B, C, D, E, F♯, G.

8. Chromatic Scale :



Musical notation for the Chromatic Scale in treble clef, 2/4 time. The scale is written in a single line with a key signature of one sharp (F♯). The notes are: G, G♯, A, A♯, B, B♯, C, C♯, D, D♯, E, E♯, F, F♯, G.

9. Range Extention :



Musical notation for the Range Extention exercise in treble clef, 2/4 time. The scale is written in two lines with a key signature of one sharp (F♯). The notes are: G, G♯, A, A♯, B, B♯, C, C♯, D, D♯, E, E♯, F, F♯, G, G♯, A, A♯, B, B♯, C, C♯, D, D♯, E, E♯, F, F♯, G.

French Horn

WARM UP V

Name _____

1. Concert Ab Scale

Musical notation for the Concert Ab Scale, featuring a treble clef, a key signature of two flats (Bb and Eb), and a common time signature (C). The scale is written in a single line with a series of eighth notes. A handwritten word "Arpeggio" is written above the staff.

2. Concert Bb Scale

Musical notation for the Concert Bb Scale, featuring a treble clef, a key signature of two flats (Bb and Eb), and a common time signature (C). The scale is written in a single line with a series of eighth notes.

3. Concert C Scale

Musical notation for the Concert C Scale, featuring a treble clef, a key signature of one sharp (F#), and a common time signature (C). The scale is written in a single line with a series of eighth notes.

4. Concert Db Scale

Musical notation for the Concert Db Scale, featuring a treble clef, a key signature of three flats (Bb, Eb, and Ab), and a common time signature (C). The scale is written in a single line with a series of eighth notes.

5. Concert Eb Scale

Musical notation for the Concert Eb Scale, featuring a treble clef, a key signature of three flats (Bb, Eb, and Ab), and a common time signature (C). The scale is written in a single line with a series of eighth notes.

6. Concert F Scale

Musical notation for the Concert F Scale, featuring a treble clef, a key signature of one flat (Bb), and a common time signature (C). The scale is written in a single line with a series of eighth notes.

7. Concert G Scale

Musical notation for the Concert G Scale, featuring a treble clef, a key signature of two sharps (F# and C#), and a common time signature (C). The scale is written in a single line with a series of eighth notes.

8. Chromatic Scale :

Musical notation for the Chromatic Scale, featuring a treble clef, a key signature of two flats (Bb and Eb), and a common time signature (C). The scale is written in a single line with a series of eighth notes, moving chromatically through all twelve notes of the scale.

9. Range Extention :

Musical notation for the Range Extention exercise, featuring a treble clef, a key signature of two flats (Bb and Eb), and a common time signature (C). The scale is written in a single line with a series of eighth notes, extending across a wide range of the instrument.

Musical notation for the Range Extention exercise, featuring a treble clef, a key signature of two flats (Bb and Eb), and a common time signature (C). The scale is written in a single line with a series of eighth notes, extending across a wide range of the instrument.

WARM UP V

Name _____

1. Concert Ab Scale

Musical notation for the Concert Ab Scale. It consists of two staves. The top staff is in treble clef with a common time signature (C). The bottom staff is in bass clef. The piece starts with a key signature of two flats (Bb and Eb) and a common time signature. It features a series of eighth-note runs in both hands, with a repeat sign at the end.

2. Concert Bb Scale

Musical notation for the Concert Bb Scale. It consists of two staves. The top staff is in treble clef with a common time signature (C). The bottom staff is in bass clef. The piece starts with a key signature of two flats (Bb and Eb) and a common time signature. It features a series of eighth-note runs in both hands, with a repeat sign at the end.

3. Concert C Scale

Musical notation for the Concert C Scale. It consists of two staves. The top staff is in treble clef with a common time signature (C). The bottom staff is in bass clef. The piece starts with a key signature of one flat (Bb) and a common time signature. It features a series of eighth-note runs in both hands, with a repeat sign at the end.

4. Concert Db Scale

Musical notation for the Concert Db Scale. It consists of two staves. The top staff is in treble clef with a common time signature (C). The bottom staff is in bass clef. The piece starts with a key signature of three flats (Bb, Eb, and Ab) and a common time signature. It features a series of eighth-note runs in both hands, with a repeat sign at the end.

5. Concert Eb Scale

Musical notation for the Concert Eb Scale. It consists of two staves. The top staff is in treble clef with a common time signature (C). The bottom staff is in bass clef. The piece starts with a key signature of three flats (Bb, Eb, and Ab) and a common time signature. It features a series of eighth-note runs in both hands, with a repeat sign at the end.

6. Concert F Scale

Musical notation for the Concert F Scale. It consists of two staves. The top staff is in treble clef with a common time signature (C). The bottom staff is in bass clef. The piece starts with a key signature of one flat (Bb) and a common time signature. It features a series of eighth-note runs in both hands, with a repeat sign at the end.

7. Concert G Scale

Musical notation for the Concert G Scale. It consists of two staves. The top staff is in treble clef with a common time signature (C). The bottom staff is in bass clef. The piece starts with a key signature of one sharp (F#) and a common time signature. It features a series of eighth-note runs in both hands, with a repeat sign at the end.

8. Chromatic Scale :

Musical notation for the Chromatic Scale. It consists of two staves. The top staff is in treble clef with a common time signature (C). The bottom staff is in bass clef. The piece starts with a key signature of one sharp (F#) and a common time signature. It features a series of eighth-note runs in both hands, with a repeat sign at the end.

9. Range Extention :

Musical notation for the Range Extention exercise. It consists of two staves. The top staff is in treble clef with a common time signature (C). The bottom staff is in bass clef. The piece starts with a key signature of one sharp (F#) and a common time signature. It features a series of eighth-note runs in both hands, with a repeat sign at the end.

Bb Tenor Sax

WARM UP V

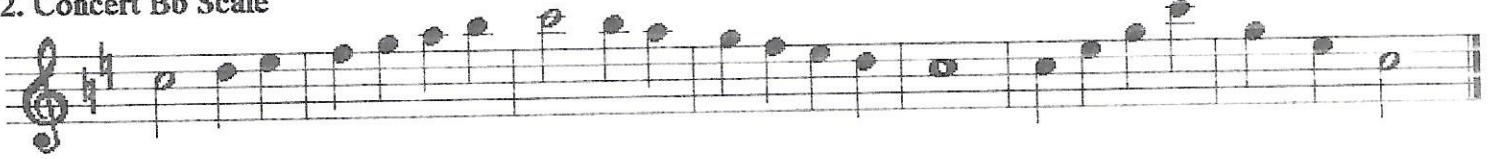
Name _____

1. Concert Ab Scale



Musical notation for the Concert Ab Scale. The scale is written on a single staff in treble clef with a key signature of two flats (Bb and Eb). It starts on Ab4 and ends on Ab5. The word "Arpeggio" is written above the staff in the latter half of the scale.

2. Concert Bb Scale




Musical notation for the Concert Bb Scale. The scale is written on a single staff in treble clef with a key signature of two flats (Bb and Eb). It starts on Bb4 and ends on Bb5.

3. Concert C Scale



Musical notation for the Concert C Scale. The scale is written on a single staff in treble clef with a key signature of one flat (Bb). It starts on C4 and ends on C5.

4. Concert Db Scale



Musical notation for the Concert Db Scale. The scale is written on a single staff in treble clef with a key signature of three flats (Bb, Eb, and Ab). It starts on Db4 and ends on Db5.

5. Concert Eb Scale



Musical notation for the Concert Eb Scale. The scale is written on a single staff in treble clef with a key signature of three flats (Bb, Eb, and Ab). It starts on Eb4 and ends on Eb5.

6. Concert F Scale



Musical notation for the Concert F Scale. The scale is written on a single staff in treble clef with a key signature of one flat (Bb). It starts on F4 and ends on F5.

7. Concert G Scale



Musical notation for the Concert G Scale. The scale is written on a single staff in treble clef with a key signature of two sharps (F# and C#). It starts on G4 and ends on G5.

8. Chromatic Scale :

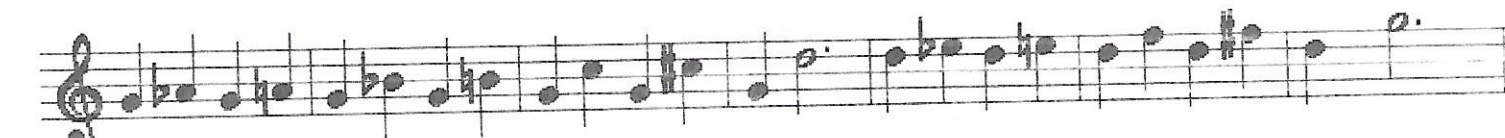


Musical notation for the Chromatic Scale. The scale is written on a single staff in treble clef with a key signature of three flats (Bb, Eb, and Ab). It covers two octaves, starting on Ab4 and ending on Ab6.

9. Range Extention :



Top line of musical notation for Range Extension. It shows a chromatic scale starting on Ab4 and extending up to Ab6, written on a single staff in treble clef with a key signature of three flats (Bb, Eb, and Ab).



Bottom line of musical notation for Range Extension. It shows a chromatic scale starting on Ab4 and extending up to Ab6, written on a single staff in treble clef with a key signature of three flats (Bb, Eb, and Ab).

Tuba

WARM UP V

Name _____

1. Concert Ab Scale

Arpeggio

Musical notation for the Concert Ab Scale in bass clef, common time. The scale consists of 12 notes: Ab, Bb, C, D, Eb, F, G, Ab, Bb, C, D, Eb. The notes are written as quarter notes, with a half note for the final Eb.

2. Concert Bb Scale

Musical notation for the Concert Bb Scale in bass clef, common time. The scale consists of 12 notes: Bb, C, D, Eb, F, G, Ab, Bb, C, D, Eb, F. The notes are written as quarter notes, with a half note for the final F.

3. Concert C Scale

Musical notation for the Concert C Scale in bass clef, common time. The scale consists of 12 notes: C, D, Eb, F, G, Ab, Bb, C, D, Eb, F, G. The notes are written as quarter notes, with a half note for the final G.

4. Concert Db Scale

Musical notation for the Concert Db Scale in bass clef, common time. The scale consists of 12 notes: Db, Eb, F, G, Ab, Bb, C, Db, Eb, F, G, Ab. The notes are written as quarter notes, with a half note for the final Ab.

5. Concert Eb Scale

Musical notation for the Concert Eb Scale in bass clef, common time. The scale consists of 12 notes: Eb, F, G, Ab, Bb, C, D, Eb, F, G, Ab, Bb. The notes are written as quarter notes, with a half note for the final Bb.

6. Concert F Scale

Musical notation for the Concert F Scale in bass clef, common time. The scale consists of 12 notes: F, G, Ab, Bb, C, D, Eb, F, G, Ab, Bb, C. The notes are written as quarter notes, with a half note for the final C.

7. Concert G Scale

Musical notation for the Concert G Scale in bass clef, common time. The scale consists of 12 notes: G, Ab, Bb, C, D, Eb, F, G, Ab, Bb, C, D. The notes are written as quarter notes, with a half note for the final D.

8. Chromatic Scale :

Musical notation for the Chromatic Scale in bass clef, common time. The scale consists of 24 notes: Ab, Bb, C, D, Eb, F, G, Ab, Bb, C, D, Eb, F, G, Ab, Bb, C, D, Eb, F, G, Ab, Bb. The notes are written as quarter notes.

9. Range Extention :

Musical notation for the Range Extension exercise in bass clef, common time. The first line consists of 12 notes: Ab, Bb, C, D, Eb, F, G, Ab, Bb, C, D, Eb. The notes are written as quarter notes.

Musical notation for the Range Extension exercise in bass clef, common time. The second line consists of 12 notes: F, G, Ab, Bb, C, D, Eb, F, G, Ab, Bb, C. The notes are written as quarter notes.