

Scale Patterns for Practice

9.) A Major:

Bb High

1.) Pentatonic Major Scale



2.) The "Blues" Major Scale



3.) A Major Scale



10.) C Major:

1.) Pentatonic Major Scale



2.) The "Blues" Major Scale

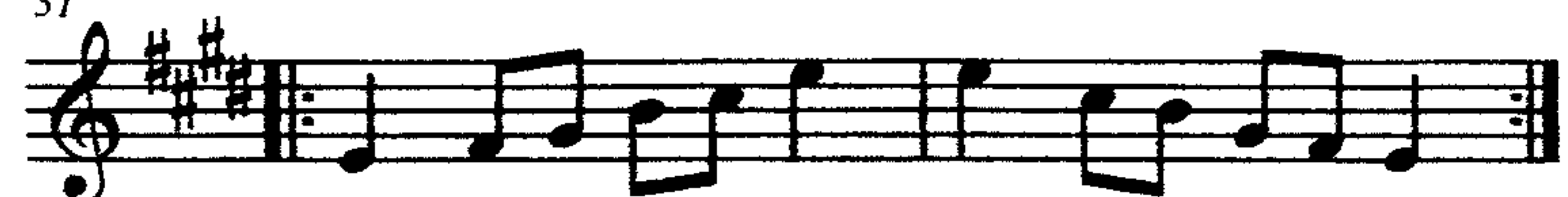


3.) C Major Scale



11.) D Major:

1.) Pentatonic Major Scale



2.) The "Blues" Major Scale



3.) D Major Scale



12.) E Major:

1.) Pentatonic Major Scale



2.) The "Blues" Major Scale



3.) E Major Scale



* = "blues" note

Note: Your teacher will tell you to play these exercises in a "rock" or "swing/blues" style and whether they should be played in "Common" or "Cut" time.

13.) F Major:

1.) Pentatonic Major Scale



2.) The "Blues" Major Scale



3.) F Major Scale



14.) G Major:

1.) Pentatonic Major Scale



2.) The "Blues" Major Scale



3.) G Major Scale



15.) D Dorian:

1.) Pentatonic minor scale



2.) The "blues" minor scale



3.) D Dorian mode



16.) F Dorian:

1.) Pentatonic minor scale



2.) The "blues" minor scale



3.) F Dorian mode



Scale Patterns for Practice

9.) A Major:

Bb Low

1.) Pentatonic Major Scale



2.) The "Blues" Major Scale



3.) A Major Scale



10.) C Major:

1.) Pentatonic Major Scale



2.) The "Blues" Major Scale



3.) C Major Scale



11.) D Major:

From here to bottom opt. 8va down.

1.) Pentatonic Major Scale



2.) The "Blues" Major Scale



3.) D Major Scale



12.) E Major:

1.) Pentatonic Major Scale



2.) The "Blues" Major Scale



3.) E Major Scale



* = "blues" note

Note: Your teacher will tell you to play these exercises in a "rock" or "swing/blues" style and whether they should be played in "Common" or "Cut" time.

13.) F Major: From here to bottom opt. 8va down.

Page # 4

1.) Pentatonic Major Scale



2.) The "Blues" Major Scale



3.) F Major Scale



14.) G Major:

1.) Pentatonic Major Scale



2.) The "Blues" Major Scale



3.) G Major Scale



15.) D Dorian:

1.) Pentatonic minor scale



2.) The "blues" minor scale



3.) D Dorian mode



16.) F Dorian:

1.) Pentatonic minor scale



2.) The "blues" minor scale



3.) F Dorian mode



Scale Patterns for Practice

9.) A Major:

Bass Clef High

1.) Pentatonic Major Scale

2.) The "Blues" Major Scale

3.) A Major Scale

10.) C Major:

1.) Pentatonic Major Scale

2.) The "Blues" Major Scale

3.) C Major Scale

11.) D Major:

1.) Pentatonic Major Scale

2.) The "Blues" Major Scale

3.) D Major Scale

12.) E Major:

1.) Pentatonic Major Scale

2.) The "Blues" Major Scale

3.) E Major Scale

* = "blues" note

Note: Your teacher will tell you to play these exercises in a "rock" or "swing/blues" style and whether they should be played in "Common" or "Cut" time.

13.) F Major:

1.) Pentatonic Major Scale

2.) The "Blues" Major Scale

3.) F Major Scale

14.) G Major:

1.) Pentatonic Major Scale

2.) The "Blues" Major Scale

3.) G Major Scale

15.) D Dorian:

1.) Pentatonic minor scale

2.) The "blues" minor scale

3.) D Dorian mode

16.) F Dorian:

1.) Pentatonic minor scale

2.) The "blues" minor scale

3.) F Dorian mode

Scale Patterns for Practice

9.) A Major:

Bass Clef Low

1.) Pentatonic Major Scale

2.) The "Blues" Major Scale

3.) A Major Scale

10.) C Major:

1.) Pentatonic Major Scale

2.) The "Blues" Major Scale

3.) C Major Scale

11.) D Major:

1.) Pentatonic Major Scale

2.) The "Blues" Major Scale

3.) D Major Scale

12.) E Major:

1.) Pentatonic Major Scale

2.) The "Blues" Major Scale

3.) E Major Scale

* = "blues" note

Note: Your teacher will tell you to play these exercises in a "rock" or "swing/blues" style and whether they should be played in "Common" or "Cut" time.

13.) F Major:

1.) Pentatonic Major Scale

opt. 8va down

2.) The "Blues" Major Scale

3.) F Major Scale

14.) G Major:

1.) Pentatonic Major Scale

2.) The "Blues" Major Scale

3.) G Major Scale

15.) D Dorian:

1.) Pentatonic minor scale

2.) The "blues" minor scale

3.) D Dorian mode

16.) F Dorian:

1.) Pentatonic minor scale

opt. 8va down

2.) The "blues" minor scale

3.) F Dorian mode

Scale Patterns for Practice

Note: Your teacher will tell you to play these exercises in a "rock" or "swing/blues" style and whether they should be played in "Common" or "Cut" time.

9.) A Major:

C Inst.

1.) Pentatonic Major Scale



2.) The "Blues" Major Scale



3.) A Major Scale



10.) C Major:

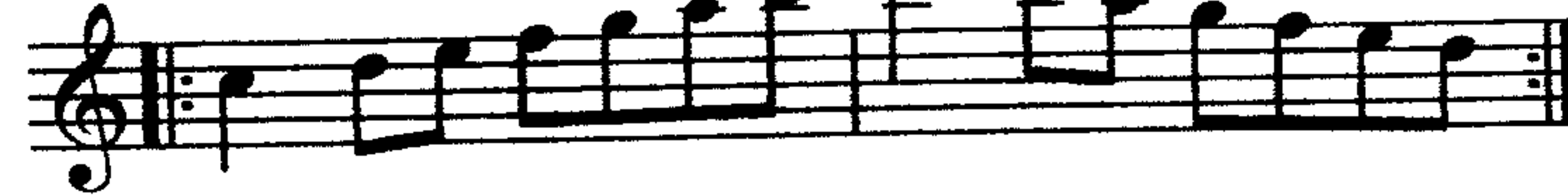
1.) Pentatonic Major Scale



2.) The "Blues" Major Scale



3.) C Major Scale



11.) D Major:

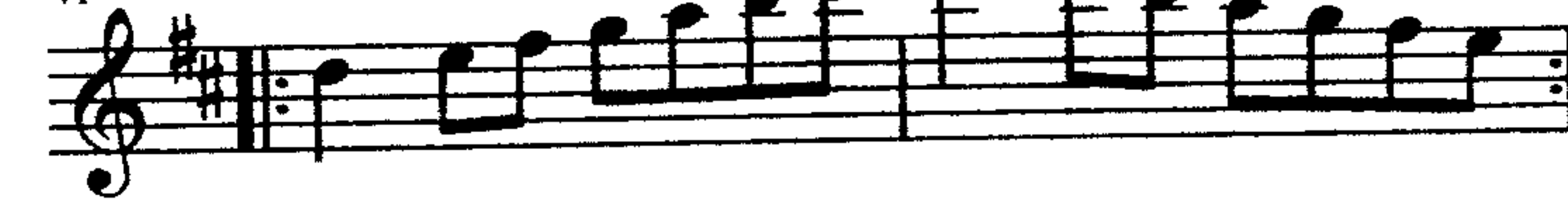
1.) Pentatonic Major Scale



2.) The "Blues" Major Scale



3.) D Major Scale



12.) E Major:

1.) Pentatonic Major Scale



2.) The "Blues" Major Scale



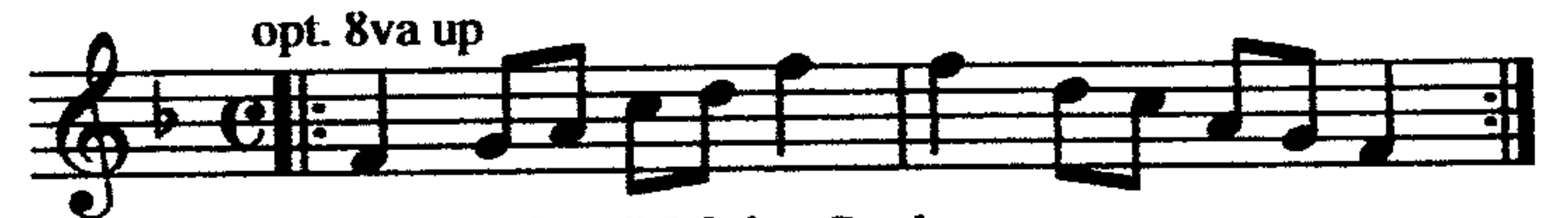
3.) E Major Scale



* = "blues" note

13.) F Major:

1.) Pentatonic Major Scale



2.) The "Blues" Major Scale



3.) F Major Scale



14.) G Major:

1.) Pentatonic Major Scale



2.) The "Blues" Major Scale



3.) G Major Scale



15.) D Dorian:

1.) Pentatonic minor scale



2.) The "blues" minor scale



3.) D Dorian mode



16.) F Dorian:

1.) Pentatonic minor scale



2.) The "blues" minor scale



3.) F Dorian mode



Scale Patterns for Practice

9.) A Major:

Eb Inst.

1.) Pentatonic Major Scale

opt. 8va down

2.) The "Blues" Major Scale

3.) A Major Scale

10.) C Major:

1.) Pentatonic Major Scale

opt. 8va down

2.) The "Blues" Major Scale

3.) C Major Scale

11.) D Major:

1.) Pentatonic Major Scale

opt. 8va down

2.) The "Blues" Major Scale

3.) D Major Scale

12.) E Major:

1.) Pentatonic Major Scale

opt. 8va up

2.) The "Blues" Major Scale

3.) E Major Scale

* = "blues" note

Note: Your teacher will tell you to play these exercises in a "rock" or "swing/blues" style and whether they should be played in "Common" or "Cut" time.

13.) F Major:

Page # 4

1.) Pentatonic Major Scale

opt. 8va up

2.) The "Blues" Major Scale

3.) F Major Scale

14.) G Major:

1.) Pentatonic Major Scale

opt. 8va up

2.) The "Blues" Major Scale

3.) G Major Scale

15.) D Dorian:

1.) Pentatonic minor scale

opt. 8va down

2.) The "blues" minor scale

3.) D Dorian mode

16.) F Dorian:

1.) Pentatonic minor scale

opt. 8va up

2.) The "blues" minor scale

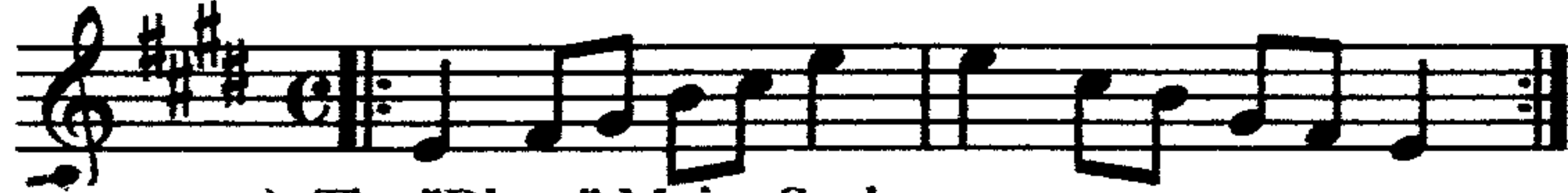
3.) F Dorian mode

Scale Patterns for Practice

9.) A Major:

Fr. Hrn.

1.) Pentatonic Major Scale



2.) The "Blues" Major Scale



3.) A Major Scale



10.) C Major:

1.) Pentatonic Major Scale



2.) The "Blues" Major Scale



3.) C Major Scale



11.) D Major:

1.) Pentatonic Major Scale



2.) The "Blues" Major Scale



3.) D Major Scale



12.) E Major:

1.) Pentatonic Major Scale



2.) The "Blues" Major Scale



3.) E Major Scale



* = "blues" note

Note: Your teacher will tell you to play these exercises in a "rock" or "swing/blues" style and whether they should be played in "Common" or "Cut" time.

13.) F Major:

1.) Pentatonic Major Scale



2.) The "Blues" Major Scale



3.) F Major Scale



14.) G Major:

1.) Pentatonic Major Scale



2.) The "Blues" Major Scale



3.) G Major Scale



15.) D Dorian:

1.) Pentatonic minor scale



2.) The "blues" minor scale



3.) D Dorian mode



16.) F Dorian:

1.) Pentatonic minor scale



2.) The "blues" minor scale



3.) F Dorian mode



Scale Patterns for Practice

Note: Your teacher will tell you to play these exercises in a "rock" or "swing/blues" style and whether they should be played in "Common" or "Cut" time.

9.) A Major:

Viola

1.) Pentatonic Major Scale

2.) The "Blues" Major Scale

3.) A Major Scale

10.) C Major:

1.) Pentatonic Major Scale

2.) The "Blues" Major Scale

3.) C Major Scale

11.) D Major:

1.) Pentatonic Major Scale

2.) The "Blues" Major Scale

3.) D Major Scale

12.) E Major:

1.) Pentatonic Major Scale

2.) The "Blues" Major Scale

3.) E Major Scale

* = "blues" note

13.) F Major:

1.) Pentatonic Major Scale

opt. 8va up

2.) The "Blues" Major Scale

3.) F Major Scale

14.) G Major:

1.) Pentatonic Major Scale

2.) The "Blues" Major Scale

3.) G Major Scale

15.) D Dorian:

1.) Pentatonic minor scale

2.) The "blues" minor scale

3.) D Dorian mode

16.) F Dorian:

1.) Pentatonic minor scale

opt. 8va up

2.) The "blues" minor scale

3.) F Dorian mode