

# "Pachelbel Canon"

Bass Clef

(chorale)

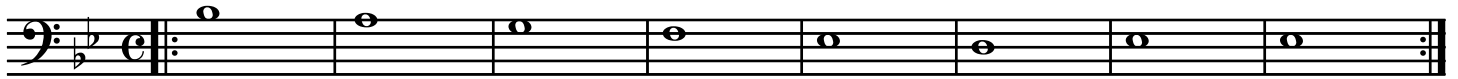
Page 2

1. Soprano

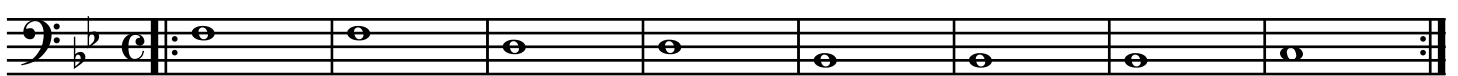
Repeat as needed.



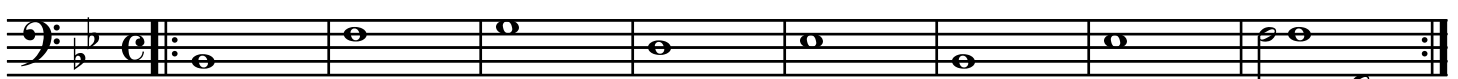
2. Alto



3. Tenor



4. Bass



opt. cut time:

## "Noodling Around"



Students may take turns "noodling" on their own, 8 measures per student.

70

71

72

# "Pachabel Canon"

(chorale)

## 1. Soprano

Repeat as needed.

Musical staff for Soprano part, measures 1-8. The staff contains whole notes on a treble clef with a key signature of two flats (Bb). The notes are: G4, A4, Bb4, C5, Bb4, A4, G4, F4.

## 2. Alto

Musical staff for Alto part, measures 9-16. The staff contains whole notes on a treble clef with a key signature of two flats (Bb). The notes are: F4, G4, A4, Bb4, C5, Bb4, A4, G4.

## 3. Tenor

Musical staff for Tenor part, measures 17-24. The staff contains whole notes on a treble clef with a key signature of two flats (Bb). The notes are: G4, A4, Bb4, C5, Bb4, A4, G4, F4.

## 4. Bass

Musical staff for Bass part, measures 25-32. The staff contains whole notes on a treble clef with a key signature of two flats (Bb). The notes are: F4, G4, A4, Bb4, C5, Bb4, A4, G4.

## "Noodling Around"

opt. cut time:

Musical staff for "Noodling Around" section, measures 33-45. The staff contains a whole rest for 8 measures (measures 33-40), followed by quarter notes: G4, A4, Bb4, C5, Bb4, A4, G4, F4.

Musical staff for "Noodling Around" section, measures 46-51. The staff contains quarter notes: G4, A4, Bb4, C5, Bb4, A4, G4, F4.

Musical staff for "Noodling Around" section, measures 52-57. The staff contains quarter notes: G4, A4, Bb4, C5, Bb4, A4, G4, F4.

Musical staff for "Noodling Around" section, measures 58-63. The staff contains quarter notes: G4, A4, Bb4, C5, Bb4, A4, G4, F4.

Musical staff for "Noodling Around" section, measures 64-69. The staff contains quarter notes: G4, A4, Bb4, C5, Bb4, A4, G4, F4.

Musical staff for "Noodling Around" section, measures 70-72. The staff contains quarter notes: G4, A4, Bb4, C5, Bb4, A4, G4, F4.

Students may take turns "noodling" on their own, 8 measures per student.

# "Pachelbel Canon"

C Instruments

(chorale)

Page 2

## 1. Soprano

Repeat as needed.

Musical staff for Soprano part, measures 1-8. The staff is in G major (one flat) and common time. It contains a sequence of whole notes: G4, A4, B4, C5, B4, A4, G4, F4.

## 2. Alto

Musical staff for Alto part, measures 9-16. The staff is in G major (one flat) and common time. It contains a sequence of whole notes: E4, D4, C4, B3, A3, G3, F3, E3.

## 3. Tenor

Musical staff for Tenor part, measures 17-24. The staff is in G major (one flat) and common time. It contains a sequence of whole notes: C4, B3, A3, G3, F3, E3, D3, C3.

## 4. Bass

Musical staff for Bass part, measures 25-32. The staff is in G major (one flat) and common time. It contains a sequence of whole notes: G2, A2, B2, C3, B2, A2, G2, F2.

## "Noodling Around"

opt. cut time:

Musical staff for "Noodling Around" section, measures 33-45. The staff is in G major (one flat) and common time. It contains a sequence of notes: G4 (8 measures), followed by a double bar line, then A4, B4, C5, B4, A4, G4, F4, E4, D4, C4, B3, A3, G3, F3, E3, D3, C3.

Musical staff for "Noodling Around" section, measures 46-51. The staff is in G major (one flat) and common time. It contains a sequence of notes: C4, B3, A3, G3, F3, E3, D3, C3, B3, A3, G3, F3, E3, D3, C3, B3, A3, G3, F3, E3, D3, C3.

Musical staff for "Noodling Around" section, measures 52-57. The staff is in G major (one flat) and common time. It contains a sequence of notes: C4, B3, A3, G3, F3, E3, D3, C3, B3, A3, G3, F3, E3, D3, C3, B3, A3, G3, F3, E3, D3, C3.

Musical staff for "Noodling Around" section, measures 58-63. The staff is in G major (one flat) and common time. It contains a sequence of notes: C4, B3, A3, G3, F3, E3, D3, C3, B3, A3, G3, F3, E3, D3, C3, B3, A3, G3, F3, E3, D3, C3.

Musical staff for "Noodling Around" section, measures 64-69. The staff is in G major (one flat) and common time. It contains a sequence of notes: C4, B3, A3, G3, F3, E3, D3, C3, B3, A3, G3, F3, E3, D3, C3, B3, A3, G3, F3, E3, D3, C3.

Musical staff for "Noodling Around" section, measures 70-72. The staff is in G major (one flat) and common time. It contains a sequence of notes: C4, B3, A3, G3, F3, E3, D3, C3, B3, A3, G3, F3, E3, D3, C3.

Students may take turns "noodling" on their own, 8 measures per student.

# "Pachelbel Canon"

(chorale)

## 1. Soprano

Repeat as needed.

Musical staff for Soprano part, measures 1-8. The staff is in treble clef with a common time signature. It contains a sequence of whole notes: C4, G3, F3, E3, D3, C3, B2, A2. Measure numbers 2 through 8 are indicated below the staff.

## 2. Alto

Musical staff for Alto part, measures 9-16. The staff is in treble clef with a common time signature. It contains a sequence of whole notes: G3, F3, E3, D3, C3, B2, A2, G2. Measure numbers 9 through 16 are indicated below the staff.

## 3. Tenor

Musical staff for Tenor part, measures 17-24. The staff is in treble clef with a common time signature. It contains a sequence of whole notes: F3, E3, D3, C3, B2, A2, G2, F2. Measure numbers 17 through 24 are indicated below the staff.

## 4. Bass

Musical staff for Bass part, measures 25-32. The staff is in treble clef with a common time signature. It contains a sequence of whole notes: E2, D2, C2, B1, A1, G1, F1, E1. Measure numbers 25 through 32 are indicated below the staff.

## "Noodling Around"

opt. cut time:

Musical staff for "Noodling Around" part, measures 33-45. The staff is in treble clef with a cut time signature. It begins with a rest for 8 measures, followed by a sequence of quarter notes: G3, F3, E3, D3, C3, B2, A2, G2. Measure numbers 33, 41, 42, 43, 44, 45 are indicated below the staff.

Musical staff for "Noodling Around" part, measures 46-51. The staff is in treble clef with a cut time signature. It contains a sequence of quarter notes: F3, E3, D3, C3, B2, A2, G2, F2. Measure numbers 46, 47, 48, 49, 50, 51 are indicated below the staff.

Musical staff for "Noodling Around" part, measures 52-57. The staff is in treble clef with a cut time signature. It contains a sequence of quarter notes: E3, D3, C3, B2, A2, G2, F2, E2. Measure numbers 52, 53, 54, 55, 56, 57 are indicated below the staff.

Musical staff for "Noodling Around" part, measures 58-63. The staff is in treble clef with a cut time signature. It contains a sequence of quarter notes: D3, C3, B2, A2, G2, F2, E2, D2. Measure numbers 58, 59, 60, 61, 62, 63 are indicated below the staff.

Musical staff for "Noodling Around" part, measures 64-69. The staff is in treble clef with a cut time signature. It contains a sequence of quarter notes: C3, B2, A2, G2, F2, E2, D2, C2. Measure numbers 64, 65, 66, 67, 68, 69 are indicated below the staff.

Musical staff for "Noodling Around" part, measures 70-72. The staff is in treble clef with a cut time signature. It contains a sequence of quarter notes: B2, A2, G2, F2, E2, D2, C2, B1. Measure numbers 70, 71, 72 are indicated below the staff.

Students may take turns "noodling" on their own, 8 measures per student.

# "Pachelbel Canon"

E♭ Instruments

(chorale)

Page 2

## 1. Soprano

Repeat as needed.

Musical staff for Soprano part, measures 1-8. The staff is in treble clef with a key signature of one sharp (F#) and a common time signature (C). The notes are: 1: G4, 2: A4, 3: B4, 4: C5, 5: B4, 6: A4, 7: G4, 8: G4.

## 2. Alto

Musical staff for Alto part, measures 9-16. The staff is in treble clef with a key signature of one sharp (F#) and a common time signature (C). The notes are: 9: G4, 10: A4, 11: B4, 12: C5, 13: B4, 14: A4, 15: G4, 16: G4.

## 3. Tenor

Musical staff for Tenor part, measures 17-24. The staff is in treble clef with a key signature of one sharp (F#) and a common time signature (C). The notes are: 17: G4, 18: A4, 19: B4, 20: C5, 21: B4, 22: A4, 23: G4, 24: G4.

## 4. Bass

Musical staff for Bass part, measures 25-32. The staff is in treble clef with a key signature of one sharp (F#) and a common time signature (C). The notes are: 25: G4, 26: A4, 27: B4, 28: C5, 29: B4, 30: A4, 31: G4, 32: G4.

opt. cut time:

## "Noodling Around"

Musical staff for Noodling Around section, measures 33-45. The staff is in treble clef with a key signature of one sharp (F#) and a common time signature (C). Measure 33 contains a whole rest. Measure 34 contains an 8-measure rest. The staff then continues with notes: 41: G4, 42: A4, 43: B4, 44: C5, 45: B4.

Musical staff for Noodling Around section, measures 46-51. The staff is in treble clef with a key signature of one sharp (F#) and a common time signature (C). The notes are: 46: G4, 47: A4, 48: B4, 49: C5, 50: B4, 51: A4.

Musical staff for Noodling Around section, measures 52-57. The staff is in treble clef with a key signature of one sharp (F#) and a common time signature (C). The notes are: 52: G4, 53: A4, 54: B4, 55: C5, 56: B4, 57: A4.

Musical staff for Noodling Around section, measures 58-63. The staff is in treble clef with a key signature of one sharp (F#) and a common time signature (C). The notes are: 58: G4, 59: A4, 60: B4, 61: C5, 62: B4, 63: A4.

Musical staff for Noodling Around section, measures 64-69. The staff is in treble clef with a key signature of one sharp (F#) and a common time signature (C). The notes are: 64: G4, 65: A4, 66: B4, 67: C5, 68: B4, 69: A4.

Musical staff for Noodling Around section, measures 70-72. The staff is in treble clef with a key signature of one sharp (F#) and a common time signature (C). The notes are: 70: G4, 71: A4, 72: B4.

Students may take turns "noodling" on their own, 8 measures per student.

# "Pachelbel Canon"

Basses

(chorale)

Page 2

## 1. Soprano

Repeat as needed.

2. Alto

3. Tenor

4. Bass

25 26 27 28 29 30 31 32

opt. cut time:

## "Noodling Around"

8

33 41 42 43 44 45

46 47 48 49 50 51

52 53 54 55 56 57

58 59 60 61 62 63

64 65 66 67 68 69

70 71 72

Students may take turns "noodling" on their own, 8 measures per student.

# "Pachabel Canon"

French Horn

(chorale)

Page 2

1. Soprano

Repeat as needed.

Musical staff for Soprano part, measures 1-8. The staff is in treble clef with a key signature of one flat (Bb) and a common time signature (C). The notes are: 1: Bb4, 2: Bb4, 3: Bb4, 4: Bb4, 5: Bb4, 6: Bb4, 7: Bb4, 8: Bb4. The staff ends with a repeat sign.

2. Alto

opt. 8va down from here on down.

Musical staff for Alto part, measures 9-16. The staff is in treble clef with a key signature of one flat (Bb) and a common time signature (C). The notes are: 9: Bb4, 10: Bb4, 11: Bb4, 12: Bb4, 13: Bb4, 14: Bb4, 15: Bb4, 16: Bb4. The staff ends with a repeat sign.

3. Tenor

Musical staff for Tenor part, measures 17-24. The staff is in treble clef with a key signature of one flat (Bb) and a common time signature (C). The notes are: 17: Bb4, 18: Bb4, 19: Bb4, 20: Bb4, 21: Bb4, 22: Bb4, 23: Bb4, 24: Bb4. The staff ends with a repeat sign.

4. Bass

Musical staff for Bass part, measures 25-32. The staff is in treble clef with a key signature of one flat (Bb) and a common time signature (C). The notes are: 25: Bb4, 26: Bb4, 27: Bb4, 28: Bb4, 29: Bb4, 30: Bb4, 31: Bb4, 32: Bb4. The staff ends with a repeat sign.

opt. cut time:

## "Noodling Around"

Musical staff for "Noodling Around" section, measures 33-45. The staff is in treble clef with a key signature of one flat (Bb) and a common time signature (C). Measure 33 contains a whole rest. Measure 34 contains the number 8. The staff continues with a sequence of notes: 41: Bb4, 42: Bb4, 43: Bb4, 44: Bb4, 45: Bb4. The staff ends with a repeat sign.

Musical staff for "Noodling Around" section, measures 46-51. The staff is in treble clef with a key signature of one flat (Bb) and a common time signature (C). The notes are: 46: Bb4, 47: Bb4, 48: Bb4, 49: Bb4, 50: Bb4, 51: Bb4. The staff ends with a repeat sign.

Musical staff for "Noodling Around" section, measures 52-57. The staff is in treble clef with a key signature of one flat (Bb) and a common time signature (C). The notes are: 52: Bb4, 53: Bb4, 54: Bb4, 55: Bb4, 56: Bb4, 57: Bb4. The staff ends with a repeat sign.

Musical staff for "Noodling Around" section, measures 58-63. The staff is in treble clef with a key signature of one flat (Bb) and a common time signature (C). The notes are: 58: Bb4, 59: Bb4, 60: Bb4, 61: Bb4, 62: Bb4, 63: Bb4. The staff ends with a repeat sign.

Musical staff for "Noodling Around" section, measures 64-69. The staff is in treble clef with a key signature of one flat (Bb) and a common time signature (C). The notes are: 64: Bb4, 65: Bb4, 66: Bb4, 67: Bb4, 68: Bb4, 69: Bb4. The staff ends with a repeat sign.

Musical staff for "Noodling Around" section, measures 70-72. The staff is in treble clef with a key signature of one flat (Bb) and a common time signature (C). The notes are: 70: Bb4, 71: Bb4, 72: Bb4. The staff ends with a repeat sign.

Students may take turns "noodling" on their own, 8 measures per student.