

# Leveled Junior Audition Scales

Ask your director, regarding articulations.

## Level I

Musical notation for Level I scale in bass clef, 2/4 time, B-flat major. The scale consists of 3 measures: G2 (quarter), A2-B2 (eighths), C3 (quarter), D3-E3 (eighths), F3 (quarter), G3 (quarter), A3-B3 (eighths), C4 (quarter), D4-E4 (eighths), F4 (quarter), G4 (quarter), A4-B4 (eighths), C5 (quarter), B4-A4 (eighths), G4 (quarter), F4-E4 (eighths), D4 (quarter), C4 (quarter), B3-A3 (eighths), G3 (quarter), F3-E3 (eighths), D3 (quarter), C3 (quarter), B2 (quarter), A2 (quarter), G2 (quarter).

2

3

## Level II

Optional "cut time" to the end.

(^)

Musical notation for Level II scale in bass clef, 2/4 time, B-flat major. The scale consists of 8 measures: G2 (quarter), A2-B2 (eighths), C3 (quarter), D3-E3 (eighths), F3 (quarter), G3 (quarter), A3-B3 (eighths), C4 (quarter), D4-E4 (eighths), F4 (quarter), G4 (quarter), A4-B4 (eighths), C5 (quarter), B4-A4 (eighths), G4 (quarter), F4-E4 (eighths), D4 (quarter), C4 (quarter), B3-A3 (eighths), G3 (quarter), F3-E3 (eighths), D3 (quarter), C3 (quarter), B2 (quarter), A2 (quarter), G2 (quarter).

4

5

6

7

8

## Level III

Optional "cut time" to the end.

(^)

Musical notation for Level III scale in bass clef, 2/4 time, B-flat major. The scale consists of 13 measures: G2 (quarter), A2-B2 (eighths), C3 (quarter), D3-E3 (eighths), F3 (quarter), G3 (quarter), A3-B3 (eighths), C4 (quarter), D4-E4 (eighths), F4 (quarter), G4 (quarter), A4-B4 (eighths), C5 (quarter), B4-A4 (eighths), G4 (quarter), F4-E4 (eighths), D4 (quarter), C4 (quarter), B3-A3 (eighths), G3 (quarter), F3-E3 (eighths), D3 (quarter), C3 (quarter), B2 (quarter), A2 (quarter), G2 (quarter).

9

10

11

12

13

## Level IV

Fingering diagram for Level IV scale: 1 3 2 4 3 5 4 6 | 5 7 6 8 7 9 8 | 8 6 7 5 6 4 5 3 | 4 2 3 1 2 7v 1

## "Intervals" 1

(^)

Musical notation for "Intervals" 1 in bass clef, 2/4 time, B-flat major. The scale consists of 9 measures: G2 (quarter), A2 (quarter), B2 (quarter), C3 (quarter), D3 (quarter), E3 (quarter), F3 (quarter), G3 (quarter), A3 (quarter), B3 (quarter), C4 (quarter), D4 (quarter), E4 (quarter), F4 (quarter), G4 (quarter), A4 (quarter), B4 (quarter), C5 (quarter), B4 (quarter), A4 (quarter), G4 (quarter), F4 (quarter), E4 (quarter), D4 (quarter), C4 (quarter), B3 (quarter), A3 (quarter), G3 (quarter), F3 (quarter), E3 (quarter), D3 (quarter), C3 (quarter), B2 (quarter), A2 (quarter), G2 (quarter).

14

15

16

17

18

19

20

21

22

## "Intervals" 2

(^)

Musical notation for "Intervals" 2 in bass clef, 2/4 time, B-flat major. The scale consists of 8 measures: G2 (quarter), A2 (quarter), B2 (quarter), C3 (quarter), D3 (quarter), E3 (quarter), F3 (quarter), G3 (quarter), A3 (quarter), B3 (quarter), C4 (quarter), D4 (quarter), E4 (quarter), F4 (quarter), G4 (quarter), A4 (quarter), B4 (quarter), C5 (quarter), B4 (quarter), A4 (quarter), G4 (quarter), F4 (quarter), E4 (quarter), D4 (quarter), C4 (quarter), B3 (quarter), A3 (quarter), G3 (quarter), F3 (quarter), E3 (quarter), D3 (quarter), C3 (quarter), B2 (quarter), A2 (quarter), G2 (quarter).

23

24

25

26

27

28

29

30

## "Play Along" Scales:

## "Pachabel Canon"

Repeats are optional.

If using MP3, begin scales at bar #9

Musical notation for "Pachabel Canon" scale 1 in bass clef, 2/4 time, B-flat major. The scale consists of 8 measures: G2 (quarter), A2 (quarter), B2 (quarter), C3 (quarter), D3 (quarter), E3 (quarter), F3 (quarter), G3 (quarter), A3 (quarter), B3 (quarter), C4 (quarter), D4 (quarter), E4 (quarter), F4 (quarter), G4 (quarter), A4 (quarter), B4 (quarter), C5 (quarter), B4 (quarter), A4 (quarter), G4 (quarter), F4 (quarter), E4 (quarter), D4 (quarter), C4 (quarter), B3 (quarter), A3 (quarter), G3 (quarter), F3 (quarter), E3 (quarter), D3 (quarter), C3 (quarter), B2 (quarter), A2 (quarter), G2 (quarter).

31

32

33

34

35

36

37

38

Musical notation for "Pachabel Canon" scale 2 in bass clef, 2/4 time, B-flat major. The scale consists of 6 measures: G2 (quarter), A2 (quarter), B2 (quarter), C3 (quarter), D3 (quarter), E3 (quarter), F3 (quarter), G3 (quarter), A3 (quarter), B3 (quarter), C4 (quarter), D4 (quarter), E4 (quarter), F4 (quarter), G4 (quarter), A4 (quarter), B4 (quarter), C5 (quarter), B4 (quarter), A4 (quarter), G4 (quarter), F4 (quarter), E4 (quarter), D4 (quarter), C4 (quarter), B3 (quarter), A3 (quarter), G3 (quarter), F3 (quarter), E3 (quarter), D3 (quarter), C3 (quarter), B2 (quarter), A2 (quarter), G2 (quarter).

39

40

41

42

43

44

Optional: Go right on to the "chorale".

# Leveled Junior Audition Scales

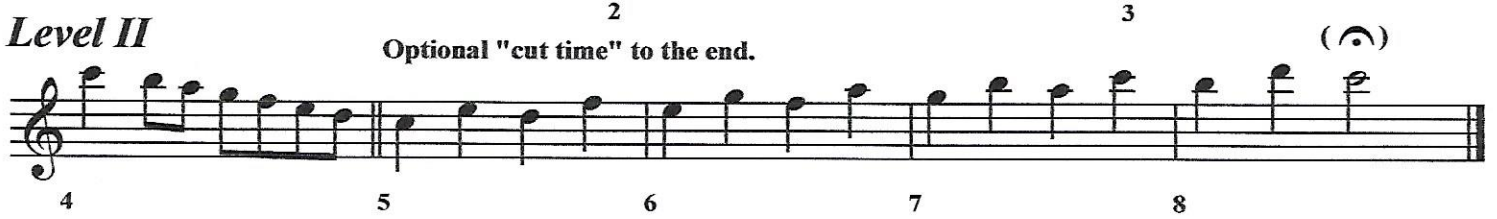
Ask your director, regarding articulations.

## Level I



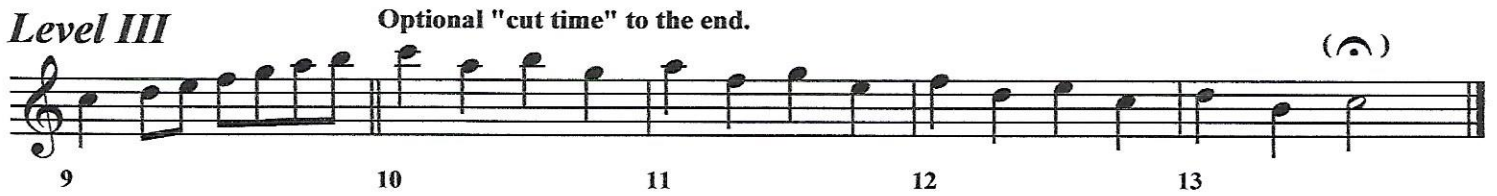
Musical notation for Level I scale, measures 1-3. The scale starts on middle C and moves up stepwise.

## Level II



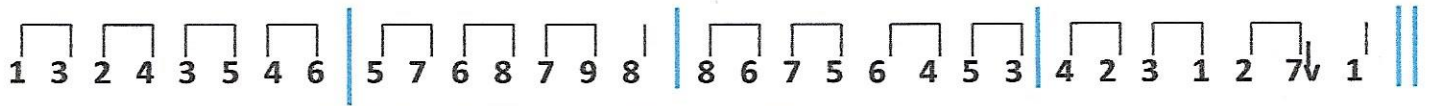
Musical notation for Level II scale, measures 4-8. Includes articulation marks (accents) above measures 2 and 3. Measure numbers 4, 5, 6, 7, 8 are printed below the staff.

## Level III



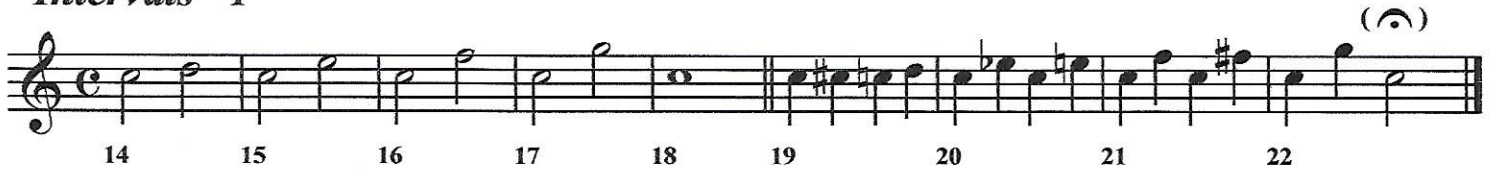
Musical notation for Level III scale, measures 9-13. Includes an articulation mark (accent) above measure 13. Measure numbers 9, 10, 11, 12, 13 are printed below the staff.

## Level IV



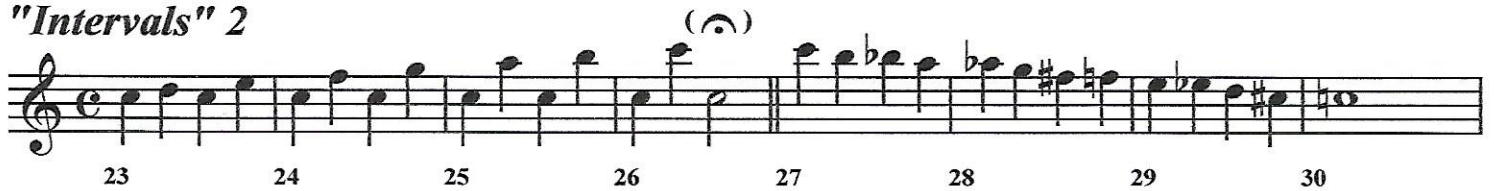
Fingering diagram for Level IV scale. The sequence of fingers is: 1 3 2 4 3 5 4 6 | 5 7 6 8 7 9 8 | 8 6 7 5 6 4 5 3 | 4 2 3 1 2 7v 1. Vertical blue lines separate the groups of notes.

## "Intervals" 1



Musical notation for "Intervals" 1, measures 14-22. Includes an articulation mark (accent) above measure 22. Measure numbers 14, 15, 16, 17, 18, 19, 20, 21, 22 are printed below the staff.

## "Intervals" 2



Musical notation for "Intervals" 2, measures 23-30. Includes an articulation mark (accent) above measure 27. Measure numbers 23, 24, 25, 26, 27, 28, 29, 30 are printed below the staff.

## "Play Along" Scales: "Pachabel Canon"

Repeats are optional.

If using MP3, begin scales at bar #9



Musical notation for "Pachabel Canon" scales, measures 31-44. The notation includes repeat signs and dynamic markings (p, f). Measure numbers 31, 32, 33, 34, 35, 36, 37, 38 are printed below the first staff, and 39, 40, 41, 42, 43, 44 are printed below the second staff.

Optional: Go right on to the "chorale".



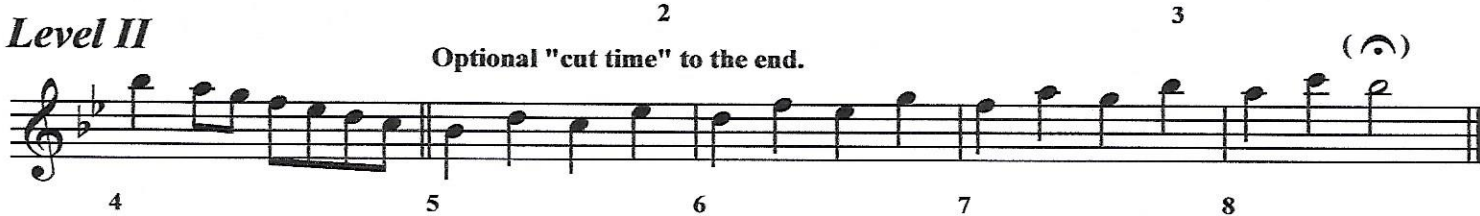
# Leveled Junior Audition Scales

Ask your director, regarding articulations.

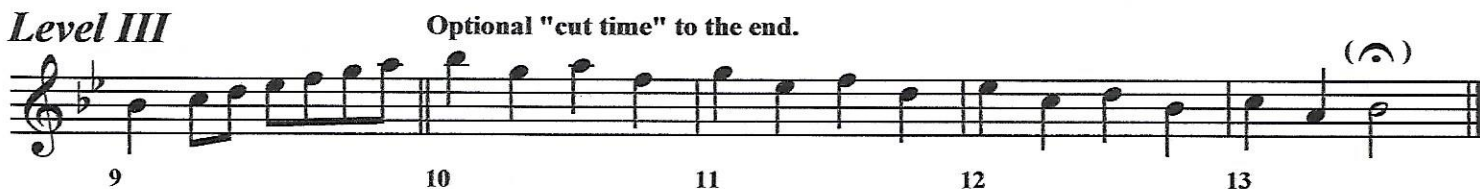
## Level I



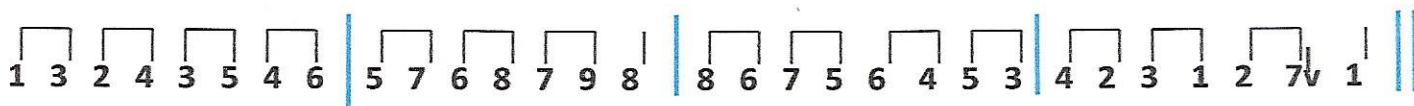
## Level II



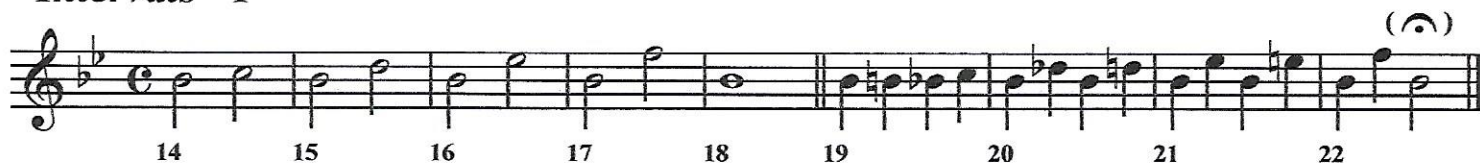
## Level III



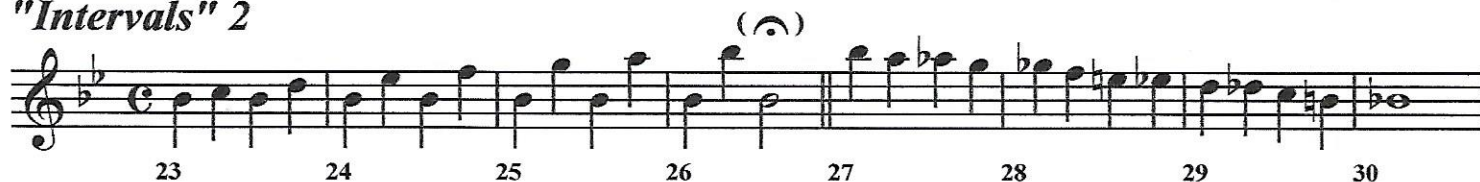
## Level IV



## "Intervals" 1



## "Intervals" 2



## "Play Along" Scales:

## "Pachabel Canon"

Repeats are optional.

If using MP3, begin scales at bar #9



Optional: Go right on to the "chorale".

# Leveled Junior Audition Scales

Ask your director, regarding articulations.

## Level I

Musical notation for Level I scale, starting on middle C (C4) in treble clef, common time. The scale consists of the notes C4, D4, E4, F4, G4, A4, B4, and C5. The notes are marked with fingerings 1, 2, 3, 4, 5, 4, 3, 2. The final note C5 has a fermata.

## Level II

Optional "cut time" to the end.

Musical notation for Level II scale, starting on middle C (C4) in treble clef, common time. The scale consists of the notes C4, D4, E4, F4, G4, A4, B4, C5, B4, A4, G4, F4, E4, D4, and C4. The notes are marked with fingerings 4, 5, 6, 7, 8, 7, 6, 5, 4, 3, 2, 1. The final note C4 has a fermata.

## Level III

Optional "cut time" to the end.

Musical notation for Level III scale, starting on middle C (C4) in treble clef, common time. The scale consists of the notes C4, D4, E4, F4, G4, A4, B4, C5, B4, A4, G4, F4, E4, D4, C4, B3, A3, G3, F3, E3, D3, and C3. The notes are marked with fingerings 9, 10, 11, 12, 13, 12, 11, 10, 9, 8, 7, 6, 5, 4, 3, 2, 1. The final note C3 has a fermata.

## Level IV

Fingering patterns for Level IV, shown as a sequence of numbers: 1 3 2 4 3 5 4 6 | 5 7 6 8 7 9 8 | 8 6 7 5 6 4 5 3 | 4 2 3 1 2 7v 1 ||

## "Intervals" 1

Musical notation for "Intervals" 1, starting on middle C (C4) in treble clef, common time. The scale consists of the notes C4, D4, E4, F4, G4, A4, B4, C5, B4, A4, G4, F4, E4, D4, C4, B4, A4, G4, F4, E4, D4, C4, B4, A4, G4, F4, E4, D4, C4, B4, A4, G4, F4, E4, D4, C4. The notes are marked with fingerings 14, 15, 16, 17, 18, 19, 20, 21, 22. The final note C4 has a fermata.

## "Intervals" 2

Musical notation for "Intervals" 2, starting on middle C (C4) in treble clef, common time. The scale consists of the notes C4, D4, E4, F4, G4, A4, B4, C5, B4, A4, G4, F4, E4, D4, C4, B4, A4, G4, F4, E4, D4, C4, B4, A4, G4, F4, E4, D4, C4, B4, A4, G4, F4, E4, D4, C4. The notes are marked with fingerings 23, 24, 25, 26, 27, 28, 29, 30. The final note C4 has a fermata.

## "Play Along" Scales:

## "Pachabel Canon"

Repeats are optional.

If using MP3, begin scales at bar #9

Musical notation for the first scale of the "Pachabel Canon" section, starting on middle C (C4) in treble clef, common time. The scale consists of the notes C4, D4, E4, F4, G4, A4, B4, C5, B4, A4, G4, F4, E4, D4, C4, B4, A4, G4, F4, E4, D4, C4. The notes are marked with fingerings 31, 32, 33, 34, 35, 36, 37, 38. The scale is enclosed in repeat signs.

Musical notation for the second scale of the "Pachabel Canon" section, starting on middle C (C4) in treble clef, common time. The scale consists of the notes C4, D4, E4, F4, G4, A4, B4, C5, B4, A4, G4, F4, E4, D4, C4, B4, A4, G4, F4, E4, D4, C4. The notes are marked with fingerings 39, 40, 41, 42, 43, 44. The scale is enclosed in repeat signs.

Optional: Go right on to the "chorale".



# Leveled Junior Audition Scales

Ask your director, regarding articulations.

## Level I

Musical notation for Level I scale in G major, C major time signature. The scale consists of: G4 (quarter), A4 (quarter), B4 (quarter), C5 (quarter), B4-A4 (beamed eighth notes), G4 (quarter), F#4 (quarter), E4 (quarter), D4 (quarter), C4 (half).

2

3

## Level II

Optional "cut time" to the end.

Musical notation for Level II scale in G major, C major time signature. The scale consists of: D4 (quarter), E4 (quarter), F#4 (quarter), G4 (quarter), A4 (quarter), B4 (quarter), C5 (quarter), B4-A4 (beamed eighth notes), G4 (quarter), F#4 (quarter), E4 (quarter), D4 (quarter), C4 (half).

(^)

4

5

6

7

8

## Level III

Optional "cut time" to the end.

Musical notation for Level III scale in G major, C major time signature. The scale consists of: E4 (quarter), F#4 (quarter), G4 (quarter), A4 (quarter), B4 (quarter), C5 (quarter), B4-A4 (beamed eighth notes), G4 (quarter), F#4 (quarter), E4 (quarter), D4 (quarter), C4 (half).

(^)

9

10

11

12

13

## Level IV

1 3 2 4 3 5 4 6 | 5 7 6 8 7 9 8 | 8 6 7 5 6 4 5 3 | 4 2 3 1 2 7v 1 ||

## "Intervals" 1

Musical notation for "Intervals" 1 in G major, C major time signature. The scale consists of: G4 (quarter), A4 (quarter), B4 (quarter), C5 (quarter), B4-A4 (beamed eighth notes), G4 (quarter), F#4 (quarter), E4 (quarter), D4 (quarter), C4 (half).

(^)

14

15

16

17

18

19

20

21

22

## "Intervals" 2

Musical notation for "Intervals" 2 in G major, C major time signature. The scale consists of: D4 (quarter), E4 (quarter), F#4 (quarter), G4 (quarter), A4 (quarter), B4 (quarter), C5 (quarter), B4-A4 (beamed eighth notes), G4 (quarter), F#4 (quarter), E4 (quarter), D4 (quarter), C4 (half).

(^)

23

24

25

26

27

28

29

30

## "Play Along" Scales:

## "Pachabel Canon"

Repeats are optional.

If using MP3, begin scales at bar #9

Musical notation for "Pachabel Canon" scale 1 in G major, C major time signature. The scale consists of: G4 (quarter), A4 (quarter), B4 (quarter), C5 (quarter), B4-A4 (beamed eighth notes), G4 (quarter), F#4 (quarter), E4 (quarter), D4 (quarter), C4 (half).

31

32

33

34

35

36

37

38

Musical notation for "Pachabel Canon" scale 2 in G major, C major time signature. The scale consists of: D4 (quarter), E4 (quarter), F#4 (quarter), G4 (quarter), A4 (quarter), B4 (quarter), C5 (quarter), B4-A4 (beamed eighth notes), G4 (quarter), F#4 (quarter), E4 (quarter), D4 (quarter), C4 (half).

39

40

41

42

43

44

Optional: Go right on to the "chorale".

Basses

# Leveled Junior Audition Scales

Ask your director, regarding articulations.

## Level I

Musical notation for Level I scale in bass clef, B-flat major, common time. The scale consists of notes G2, A2, Bb2, C3, D3, E3, F3, G3, A3, Bb3, C4, D4, E4, F4, G4. Fingering: 1, 2, 3, 2, 1, 2, 3, 2, 1, 2, 3, 2, 1, 2, 3, 2, 1. A fermata is placed over the final G4.

## Level II

Optional "cut time" to the end. (◡)

Musical notation for Level II scale in bass clef, B-flat major, common time. The scale consists of notes G2, A2, Bb2, C3, D3, E3, F3, G3, A3, Bb3, C4, D4, E4, F4, G4, A4, Bb4, C5, D5, E5, F5, G5. Fingering: 4, 5, 6, 7, 8, 7, 6, 5, 4, 3, 2, 1, 2, 3, 4, 5, 6, 7, 8, 7, 6, 5, 4, 3, 2, 1. A fermata is placed over the final G5.

## Level III

Optional "cut time" to the end. (◡)

Musical notation for Level III scale in bass clef, B-flat major, common time. The scale consists of notes G2, A2, Bb2, C3, D3, E3, F3, G3, A3, Bb3, C4, D4, E4, F4, G4, A4, Bb4, C5, D5, E5, F5, G5, A5, Bb5, C6, D6, E6, F6, G6. Fingering: 9, 10, 11, 12, 13, 12, 11, 10, 9, 8, 7, 6, 5, 4, 3, 2, 1, 2, 3, 4, 5, 6, 7, 8, 9, 10, 11, 12, 13, 12, 11, 10, 9, 8, 7, 6, 5, 4, 3, 2, 1. A fermata is placed over the final G6.

## Level IV

Fingering diagram for Level IV scale: 1 3 2 4 3 5 4 6 | 5 7 6 8 7 9 8 | 8 6 7 5 6 4 5 3 | 4 2 3 1 2 7v 1 ||

## "Intervals" 1

Musical notation for "Intervals" 1 in bass clef, B-flat major, common time. The scale consists of notes G2, A2, Bb2, C3, D3, E3, F3, G3, A3, Bb3, C4, D4, E4, F4, G4, A4, Bb4, C5, D5, E5, F5, G5. Fingering: 14, 15, 16, 17, 18, 19, 20, 21, 22. A fermata is placed over the final G5.

## "Intervals" 2

Musical notation for "Intervals" 2 in bass clef, B-flat major, common time. The scale consists of notes G2, A2, Bb2, C3, D3, E3, F3, G3, A3, Bb3, C4, D4, E4, F4, G4, A4, Bb4, C5, D5, E5, F5, G5. Fingering: 23, 24, 25, 26, 27, 28, 29, 30. A fermata is placed over the final G5.

## "Play Along" Scales:

## "Pachabel Canon"

Repeats are optional.

If using MP3, begin scales at bar #9

Musical notation for "Pachabel Canon" scale 1 in bass clef, B-flat major, common time. The scale consists of notes G2, A2, Bb2, C3, D3, E3, F3, G3, A3, Bb3, C4, D4, E4, F4, G4, A4, Bb4, C5, D5, E5, F5, G5. Fingering: 31, 32, 33, 34, 35, 36, 37, 38.

Musical notation for "Pachabel Canon" scale 2 in bass clef, B-flat major, common time. The scale consists of notes G2, A2, Bb2, C3, D3, E3, F3, G3, A3, Bb3, C4, D4, E4, F4, G4, A4, Bb4, C5, D5, E5, F5, G5. Fingering: 39, 40, 41, 42, 43, 44.

Optional: Go right on to the "chorale".



# Leveled Junior Audition Scales

Ask your director, regarding articulations.

**Level I** Optional: 8va down.

Musical notation for Level I scale, measures 1-3. The scale starts on G4 and ends on G5. Measure numbers 2 and 3 are indicated below the staff.

**Level II**

Optional "cut time" to the end.

Musical notation for Level II scale, measures 4-8. The scale starts on G4 and ends on G5. Measure numbers 4, 5, 6, 7, and 8 are indicated below the staff. A fermata is placed over the final note.

**Level III**

Optional "cut time" to the end.

Musical notation for Level III scale, measures 9-13. The scale starts on G4 and ends on G5. Measure numbers 9, 10, 11, 12, and 13 are indicated below the staff. A fermata is placed over the final note.

**Level IV**

Fingering patterns for Level IV scale, measures 14-22. The patterns are: 1 3 2 4 3 5 4 6 | 5 7 6 8 7 9 8 | 8 6 7 5 6 4 5 3 | 4 2 3 1 2 7v 1 ||

**"Intervals" 1**

Musical notation for "Intervals" 1, measures 14-22. The scale starts on G4 and ends on G5. Measure numbers 14, 15, 16, 17, 18, 19, 20, 21, and 22 are indicated below the staff. A fermata is placed over the final note.

**"Intervals" 2**

Musical notation for "Intervals" 2, measures 23-30. The scale starts on G4 and ends on G5. Measure numbers 23, 24, 25, 26, 27, 28, 29, and 30 are indicated below the staff. A fermata is placed over the final note.

**"Play Along" Scales:**

**"Pachabel Canon"**

Repeats are optional.

If using MP3, begin scales at bar #9

Musical notation for "Pachabel Canon" scales, measures 31-38. The scale starts on G4 and ends on G5. Measure numbers 31, 32, 33, 34, 35, 36, 37, and 38 are indicated below the staff.

Musical notation for "Pachabel Canon" scales, measures 39-44. The scale starts on G4 and ends on G5. Measure numbers 39, 40, 41, 42, 43, and 44 are indicated below the staff.

Optional: Go right on to the "chorale".