

READING KEY SIGNATURES

C Instruments

1. Scale (Concert Bb)



2. Scale (Concert F)



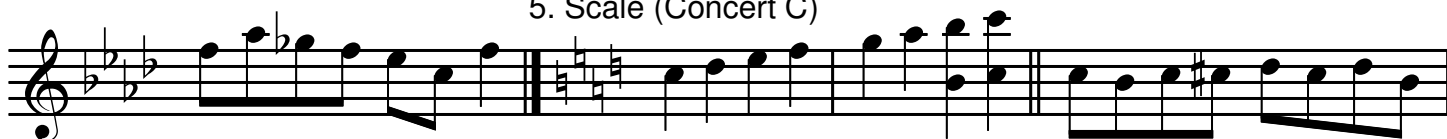
3. Scale (Concert Eb)



4. Scale (Concert Ab)



5. Scale (Concert C)



6. Another exercise in Concert C



READING KEY SIGNATURES II

Bb Instruments

1. Scale (Concert Bb)



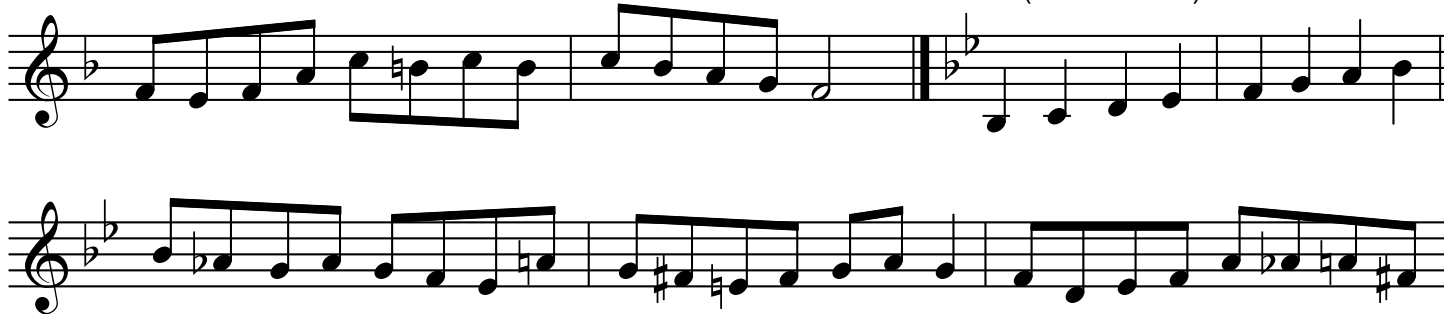
2. Scale (Concert F)



3. Scale (Concert Eb)



4. Scale (Concert Ab)



5. Scale (Concert C)



6. Another exercise in Concert C



READING KEY SIGNATURES II

F Instruments

1. Scale (Concert Bb)



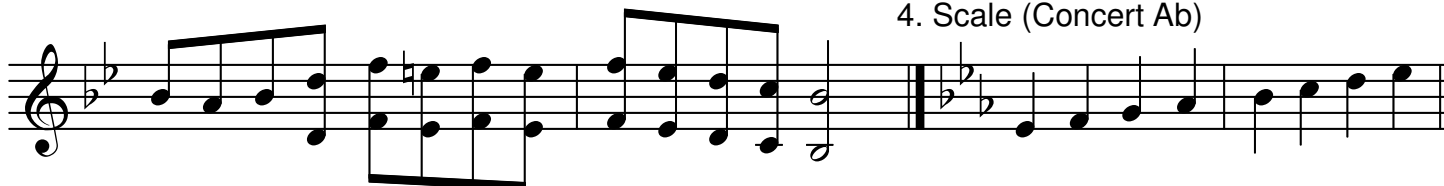
2. Scale (Concert F)



3. Scale (Concert Eb)



4. Scale (Concert Ab)



5. Scale (Concert C)



6. Another exercise in Concert C



READING KEY SIGNATURES II

E♭ Instruments

1. Scale (Concert B♭)



2. Scale (Concert F)



3. Scale (Concert E♭)



4. Scale (Concert A♭)



5. Scale (Concert C)



6. Another exercise in Concert C



READING KEY SIGNATURES

Bass Clef

1. Scale (Concert Bb)



2. Scale (Concert F)



3. Scale (Concert Eb)



4. Scale (Concert Ab)



5. Scale (Concert C)



6. Another exercise in Concert C



READING KEY SIGNATURES

Basses

1. Scale (Concert Bb)

Musical notation for Scale 1 (Concert Bb) in bass clef, common time. The scale starts on Bb and consists of two phrases: an ascending eighth-note scale and a descending eighth-note scale.

2. Scale (Concert F)

Musical notation for Scale 2 (Concert F) in bass clef, common time. The scale starts on F and consists of two phrases: an ascending eighth-note scale and a descending eighth-note scale.

Musical notation for Scale 3 (Concert Eb) in bass clef, common time. The scale starts on Eb and consists of two phrases: an ascending eighth-note scale and a descending eighth-note scale.

3. Scale (Concert Eb)

Musical notation for Scale 4 (Concert Ab) in bass clef, common time. The scale starts on Ab and consists of two phrases: an ascending eighth-note scale and a descending eighth-note scale.

4. Scale (Concert Ab)

Musical notation for Scale 5 (Concert C) in bass clef, common time. The scale starts on C and consists of two phrases: an ascending eighth-note scale and a descending eighth-note scale.

Musical notation for Scale 6 (Another exercise in Concert C) in bass clef, common time. This is a more complex exercise starting on C, featuring various intervals and accidentals.

5. Scale (Concert C)

Musical notation for Scale 7 (Another exercise in Concert C) in bass clef, common time. This is another complex exercise starting on C, featuring various intervals and accidentals.

6. Another exercise in Concert C

Musical notation for Scale 8 (Another exercise in Concert C) in bass clef, common time. This is a final complex exercise starting on C, featuring various intervals and accidentals.

READING KEY SIGNATURES II

Basses

1. Scale (Concert Bb)



2. Scale (Concert F)



3. Scale (Concert Eb)



4. Scale (Concert Ab)



5. Scale (Concert C)



6. Another exercise in Concert C



READING KEY SIGNATURES II

Bb Tenor Sax

1. Scale (Concert Bb)



2. Scale (Concert F)



3. Scale (Concert Eb)



4. Scale (Concert Ab)



5. Scale (Concert C)



6. Another exercise in Concert C



READING KEY SIGNATURES

Viola

1. Scale (Concert Bb)

Musical notation for scale 1, Concert Bb. The scale is written in bass clef with a key signature of two flats (Bb and Eb) and a common time signature (C). It consists of two lines of music. The first line contains measures 1, 2, and 3. The second line contains measures 4 and 5. The notes are: 1 (Bb), 2 (Bb), 3 (Bb), 4 (Bb), 5 (Bb), 6 (Bb), 7 (Bb), 8 (Bb), 9 (Bb), 10 (Bb), 11 (Bb), 12 (Bb), 13 (Bb), 14 (Bb), 15 (Bb), 16 (Bb), 17 (Bb), 18 (Bb), 19 (Bb), 20 (Bb), 21 (Bb), 22 (Bb), 23 (Bb), 24 (Bb), 25 (Bb), 26 (Bb), 27 (Bb), 28 (Bb), 29 (Bb), 30 (Bb), 31 (Bb), 32 (Bb), 33 (Bb), 34 (Bb).

2. Scale (Concert F)

Musical notation for scale 2, Concert F. The scale is written in bass clef with a key signature of one flat (Bb) and a common time signature (C). It consists of two lines of music. The first line contains measures 5, 6, and 7. The second line contains measures 8, 9, 10, 11, and 12. The notes are: 5 (F), 6 (F), 7 (F), 8 (F), 9 (F), 10 (F), 11 (F), 12 (F), 13 (F), 14 (F), 15 (F), 16 (F), 17 (F), 18 (F), 19 (F), 20 (F), 21 (F), 22 (F), 23 (F), 24 (F), 25 (F), 26 (F), 27 (F), 28 (F), 29 (F), 30 (F), 31 (F), 32 (F), 33 (F), 34 (F).

3. Scale (Concert Eb)

Musical notation for scale 3, Concert Eb. The scale is written in bass clef with a key signature of three flats (Bb, Eb, and Ab) and a common time signature (C). It consists of two lines of music. The first line contains measures 13, 14, and 15. The second line contains measures 16, 17, 18, 19, and 20. The notes are: 13 (Eb), 14 (Eb), 15 (Eb), 16 (Eb), 17 (Eb), 18 (Eb), 19 (Eb), 20 (Eb), 21 (Eb), 22 (Eb), 23 (Eb), 24 (Eb), 25 (Eb), 26 (Eb), 27 (Eb), 28 (Eb), 29 (Eb), 30 (Eb), 31 (Eb), 32 (Eb), 33 (Eb), 34 (Eb).

4. Scale (Concert Ab)

Musical notation for scale 4, Concert Ab. The scale is written in bass clef with a key signature of four flats (Bb, Eb, Ab, and Db) and a common time signature (C). It consists of two lines of music. The first line contains measures 17, 18, and 19. The second line contains measures 20, 21, 22, 23, and 24. The notes are: 17 (Ab), 18 (Ab), 19 (Ab), 20 (Ab), 21 (Ab), 22 (Ab), 23 (Ab), 24 (Ab), 25 (Ab), 26 (Ab), 27 (Ab), 28 (Ab), 29 (Ab), 30 (Ab), 31 (Ab), 32 (Ab), 33 (Ab), 34 (Ab).

5. Scale (Concert C)

Musical notation for scale 5, Concert C. The scale is written in bass clef with a key signature of one sharp (F#) and a common time signature (C). It consists of two lines of music. The first line contains measures 24, 25, and 26. The second line contains measures 27, 28, 29, 30, and 31. The notes are: 24 (C), 25 (C), 26 (C), 27 (C), 28 (C), 29 (C), 30 (C), 31 (C), 32 (C), 33 (C), 34 (C).

6. Another exercise in Concert C

Musical notation for scale 6, Another exercise in Concert C. The scale is written in bass clef with a key signature of one sharp (F#) and a common time signature (C). It consists of two lines of music. The first line contains measures 31, 32, and 33. The second line contains measures 34, 35, 36, 37, and 38. The notes are: 31 (C), 32 (C), 33 (C), 34 (C), 35 (C), 36 (C), 37 (C), 38 (C), 39 (C), 40 (C), 41 (C), 42 (C), 43 (C), 44 (C), 45 (C), 46 (C), 47 (C), 48 (C), 49 (C), 50 (C), 51 (C), 52 (C), 53 (C), 54 (C), 55 (C), 56 (C), 57 (C), 58 (C), 59 (C), 60 (C).

Reading Key Signatures

Percussion (optional)

1.)

Musical notation for exercise 1. It consists of two staves. The top staff has a treble clef and a '2' above it, indicating a second line. The bottom staff has a bass clef. The music is in 2/4 time and features a rhythmic pattern of eighth notes in the upper voice and quarter notes in the lower voice.

2.)

Musical notation for exercise 2. It consists of two staves. The top staff has a treble clef and a '2' above it, indicating a second line. The bottom staff has a bass clef. The music is in 2/4 time and features a rhythmic pattern of eighth notes in the upper voice and quarter notes in the lower voice.

3.)

Musical notation for exercise 3. It consists of two staves. The top staff has a treble clef and a '2' above it, indicating a second line. The bottom staff has a bass clef. The music is in 2/4 time and features a rhythmic pattern of eighth notes in the upper voice and quarter notes in the lower voice.

4.)

Musical notation for exercise 4. It consists of two staves. The top staff has a treble clef and a '2' above it, indicating a second line. The bottom staff has a bass clef. The music is in 2/4 time and features a rhythmic pattern of eighth notes in the upper voice and quarter notes in the lower voice. There are two triplets marked with a '3' above the notes.

5.)

Musical notation for exercise 5. It consists of two staves. The top staff has a treble clef and a '2' above it, indicating a second line. The bottom staff has a bass clef. The music is in 2/4 time and features a rhythmic pattern of eighth notes in the upper voice and quarter notes in the lower voice.

6.)

Musical notation for exercise 6. It consists of two staves. The top staff has a treble clef and a '2' above it, indicating a second line. The bottom staff has a bass clef. The music is in 2/4 time and features a rhythmic pattern of eighth notes in the upper voice and quarter notes in the lower voice. There are six groups of sixteenth notes marked with a '6' above them, and three groups of eighth notes marked with a '3' above them.