

Scale Patterns for Practice

9.) A Major:

Bb High

1.) Pentatonic Major Scale



2.) The "Blues" Major Scale



3.) A Major Scale



10.) C Major:

1.) Pentatonic Major Scale



2.) The "Blues" Major Scale



3.) C Major Scale



11.) D Major:

1.) Pentatonic Major Scale



2.) The "Blues" Major Scale



3.) D Major Scale



12.) E Major:

1.) Pentatonic Major Scale



2.) The "Blues" Major Scale



3.) E Major Scale



* = "blues" note

Note: Your teacher will tell you to play these exercises in a "rock" or "swing/blues" style and whether they should be played in "Common" or "Cut" time.

13.) F Major:

1.) Pentatonic Major Scale



2.) The "Blues" Major Scale



3.) F Major Scale



14.) G Major:

1.) Pentatonic Major Scale



2.) The "Blues" Major Scale



3.) G Major Scale



15.) D Dorian:

1.) Pentatonic minor scale



2.) The "blues" minor scale



3.) D Dorian mode



16.) F Dorian:

1.) Pentatonic minor scale



2.) The "blues" minor scale



3.) F Dorian mode



Scale Patterns for Practice

9.) A Major:

Bb Low

1.) Pentatonic Major Scale



2.) The "Blues" Major Scale

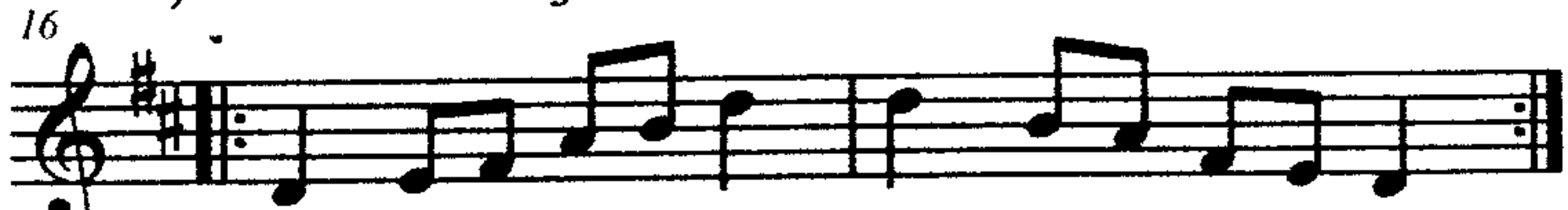


3.) A Major Scale



10.) C Major:

1.) Pentatonic Major Scale



2.) The "Blues" Major Scale



3.) C Major Scale



11.) D Major:

From here to bottom opt. 8va down.

1.) Pentatonic Major Scale



2.) The "Blues" Major Scale



3.) D Major Scale

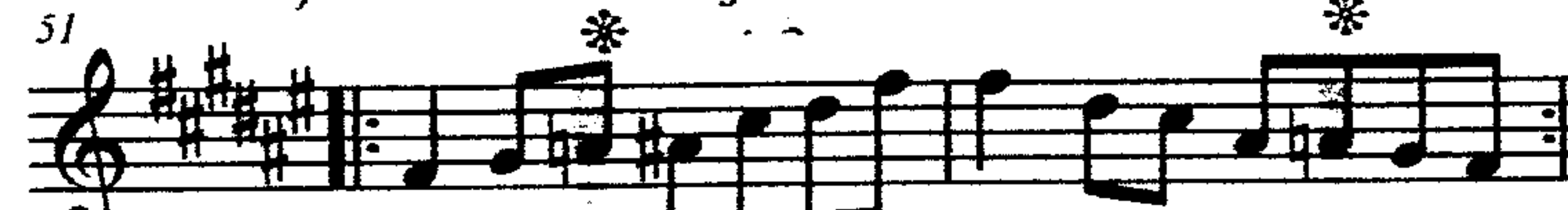


12.) E Major:

1.) Pentatonic Major Scale



2.) The "Blues" Major Scale



3.) E Major Scale



* = "blues" note

Note: Your teacher will tell you to play these exercises in a "rock" or "swing/blues" style and whether they should be played in "Common" or "Cut" time.

13.) F Major: From here to bottom opt. 8va down.

Page # 4

1.) Pentatonic Major Scale



2.) The "Blues" Major Scale



3.) F Major Scale



14.) G Major:

1.) Pentatonic Major Scale



2.) The "Blues" Major Scale



3.) G Major Scale



15.) D Dorian:

1.) Pentatonic minor scale



2.) The "blues" minor scale



3.) D Dorian mode

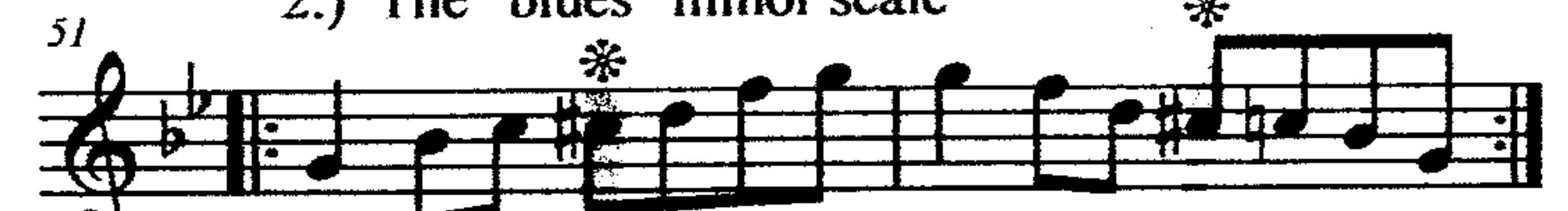


16.) F Dorian:

1.) Pentatonic minor scale



2.) The "blues" minor scale



3.) F Dorian mode

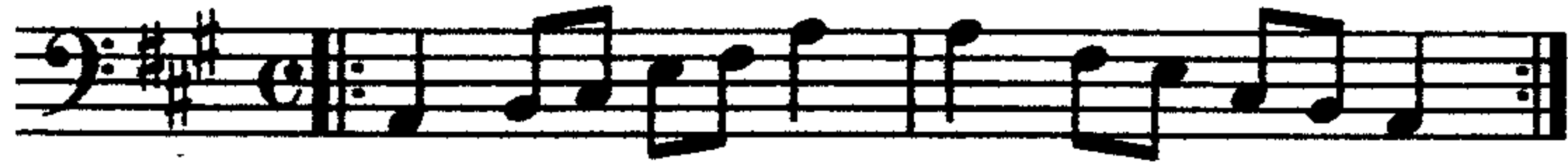


Scale Patterns for Practice

9.) A Major:

Bass Clef High

1.) Pentatonic Major Scale



2.) The "Blues" Major Scale



3.) A Major Scale



10.) C Major:

1.) Pentatonic Major Scale



2.) The "Blues" Major Scale



3.) C Major Scale



11.) D Major:

1.) Pentatonic Major Scale



2.) The "Blues" Major Scale



3.) D Major Scale



12.) E Major:

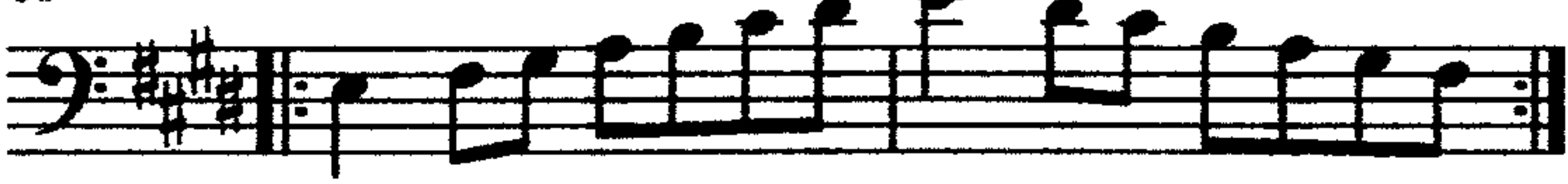
1.) Pentatonic Major Scale



2.) The "Blues" Major Scale



3.) E Major Scale



* = "blues" note

Note: Your teacher will tell you to play these exercises in a "rock" or "swing/blues" style and whether they should be played in "Common" or "Cut" time.

13.) F Major:

1.) Pentatonic Major Scale

opt. 8va up



2.) The "Blues" Major Scale



3.) F Major Scale



14.) G Major:

1.) Pentatonic Major Scale

opt. 8va up



2.) The "Blues" Major Scale



3.) G Major Scale



15.) D Dorian:

1.) Pentatonic minor scale



2.) The "blues" minor scale



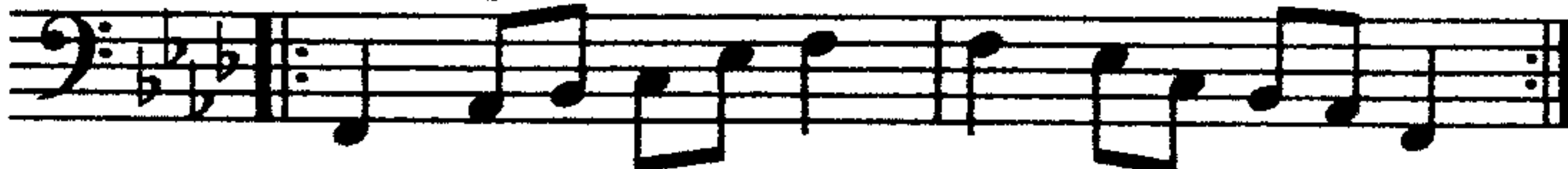
3.) D Dorian mode



16.) F Dorian:

1.) Pentatonic minor scale

opt. 8va up



2.) The "blues" minor scale



3.) F Dorian mode



Scale Patterns for Practice

9.) A Major:

Bass Clef Low

1.) Pentatonic Major Scale

Musical notation for the A Major Pentatonic Major Scale in bass clef, starting on A2. The scale consists of the notes A, B, C, E, and F#.

2.) The "Blues" Major Scale

Musical notation for the A Major Blues Scale in bass clef, starting on A2. The scale consists of the notes A, B, C, E, F#, and G. The G note is marked with an asterisk (*).

3.) A Major Scale

Musical notation for the A Major Scale in bass clef, starting on A2. The scale consists of the notes A, B, C, D, E, F#, G, and A.

10.) C Major:

1.) Pentatonic Major Scale

Musical notation for the C Major Pentatonic Major Scale in bass clef, starting on C2. The scale consists of the notes C, D, E, G, and A.

2.) The "Blues" Major Scale

Musical notation for the C Major Blues Scale in bass clef, starting on C2. The scale consists of the notes C, D, E, G, A, and Bb. The Bb note is marked with an asterisk (*).

3.) C Major Scale

Musical notation for the C Major Scale in bass clef, starting on C2. The scale consists of the notes C, D, E, F, G, A, and B.

11.) D Major:

1.) Pentatonic Major Scale

Musical notation for the D Major Pentatonic Major Scale in bass clef, starting on D2. The scale consists of the notes D, E, F#, A, and B.

2.) The "Blues" Major Scale

Musical notation for the D Major Blues Scale in bass clef, starting on D2. The scale consists of the notes D, E, F#, A, B, and C. The C note is marked with an asterisk (*).

3.) D Major Scale

Musical notation for the D Major Scale in bass clef, starting on D2. The scale consists of the notes D, E, F#, G, A, B, and C#.

12.) E Major:

1.) Pentatonic Major Scale

Musical notation for the E Major Pentatonic Major Scale in bass clef, starting on E2. The scale consists of the notes E, F#, G#, B, and C#.

2.) The "Blues" Major Scale

Musical notation for the E Major Blues Scale in bass clef, starting on E2. The scale consists of the notes E, F#, G#, B, C#, and D. The D note is marked with an asterisk (*).

3.) E Major Scale

Musical notation for the E Major Scale in bass clef, starting on E2. The scale consists of the notes E, F#, G#, A, B, C#, and D#.

* = "blues" note

Note: Your teacher will tell you to play these exercises in a "rock" or "swing/blues" style and whether they should be played in "Common" or "Cut" time.

13.) F Major:

1.) Pentatonic Major Scale

opt. 8va down

Musical notation for the F Major Pentatonic Major Scale in bass clef, starting on F2. The scale consists of the notes F, G, A, C, and D.

2.) The "Blues" Major Scale

Musical notation for the F Major Blues Scale in bass clef, starting on F2. The scale consists of the notes F, G, A, C, D, and Eb. The Eb note is marked with an asterisk (*).

3.) F Major Scale

Musical notation for the F Major Scale in bass clef, starting on F2. The scale consists of the notes F, G, A, Bb, C, D, E, and F.

14.) G Major:

1.) Pentatonic Major Scale

Musical notation for the G Major Pentatonic Major Scale in bass clef, starting on G2. The scale consists of the notes G, A, B, D, and E.

2.) The "Blues" Major Scale

Musical notation for the G Major Blues Scale in bass clef, starting on G2. The scale consists of the notes G, A, B, D, E, and F. The F note is marked with an asterisk (*).

3.) G Major Scale

Musical notation for the G Major Scale in bass clef, starting on G2. The scale consists of the notes G, A, B, C, D, E, and F#.

15.) D Dorian:

1.) Pentatonic minor scale

Musical notation for the D Dorian Pentatonic minor scale in bass clef, starting on D2. The scale consists of the notes D, E, F, A, and B.

2.) The "blues" minor scale

Musical notation for the D Dorian Blues Scale in bass clef, starting on D2. The scale consists of the notes D, E, F, A, B, and C. The C note is marked with an asterisk (*).

3.) D Dorian mode

Musical notation for the D Dorian mode in bass clef, starting on D2. The scale consists of the notes D, E, F, G, A, B, and C.

16.) F Dorian:

1.) Pentatonic minor scale

opt. 8va down

Musical notation for the F Dorian Pentatonic minor scale in bass clef, starting on F2. The scale consists of the notes F, G, A, C, and D.

2.) The "blues" minor scale

Musical notation for the F Dorian Blues Scale in bass clef, starting on F2. The scale consists of the notes F, G, A, C, D, and Eb. The Eb note is marked with an asterisk (*).

3.) F Dorian mode

Musical notation for the F Dorian mode in bass clef, starting on F2. The scale consists of the notes F, G, A, Bb, C, D, E, and F.

9.) A Major:

C Inst.

1.) Pentatonic Major Scale



2.) The "Blues" Major Scale



3.) A Major Scale



10.) C Major:

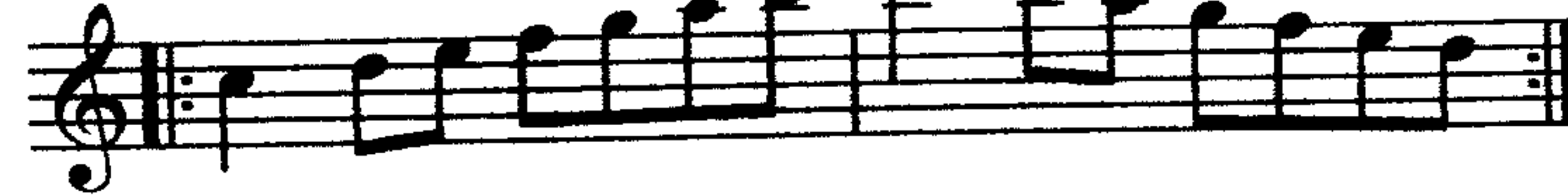
1.) Pentatonic Major Scale



2.) The "Blues" Major Scale



3.) C Major Scale



11.) D Major:

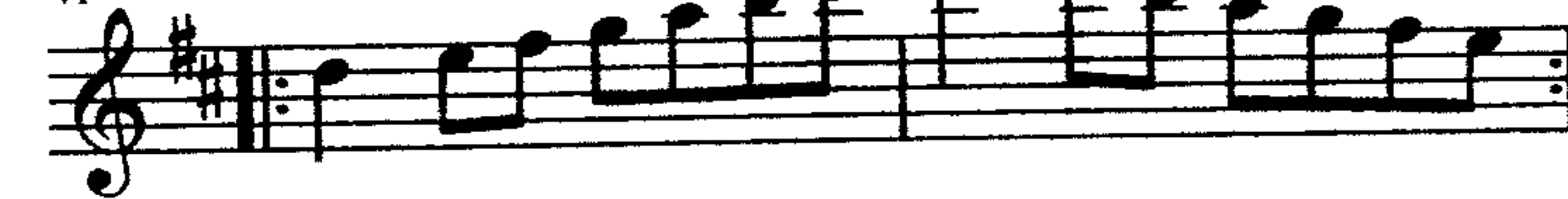
1.) Pentatonic Major Scale



2.) The "Blues" Major Scale



3.) D Major Scale



12.) E Major:

1.) Pentatonic Major Scale



2.) The "Blues" Major Scale



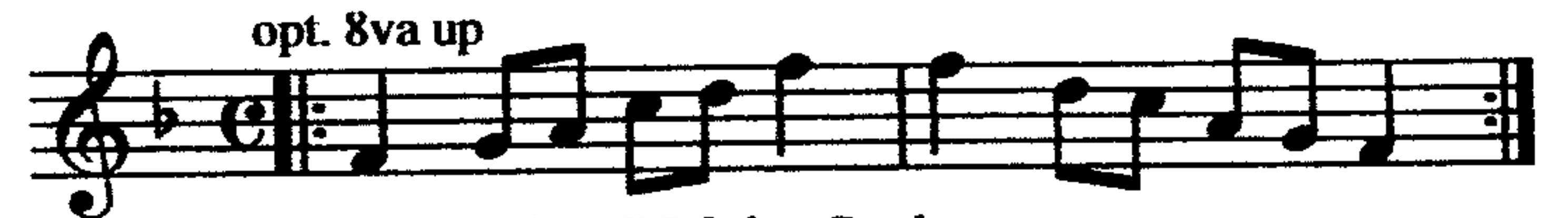
3.) E Major Scale



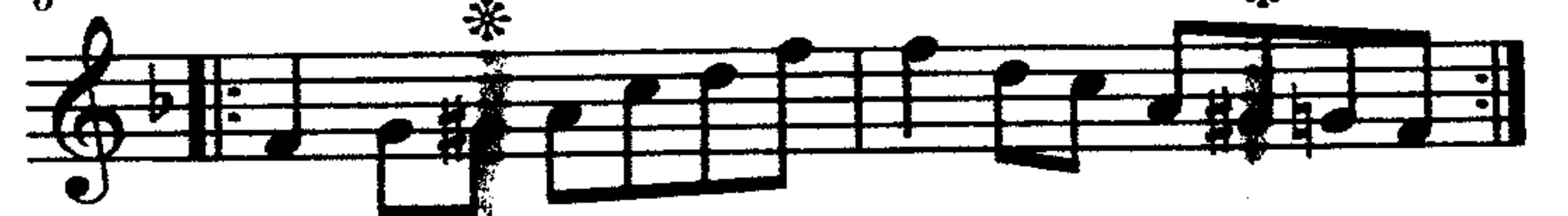
* = "blues" note

13.) F Major:

1.) Pentatonic Major Scale



2.) The "Blues" Major Scale



3.) F Major Scale



14.) G Major:

1.) Pentatonic Major Scale



2.) The "Blues" Major Scale



3.) G Major Scale



15.) D Dorian:

1.) Pentatonic minor scale



2.) The "blues" minor scale



3.) D Dorian mode



16.) F Dorian:

1.) Pentatonic minor scale



2.) The "blues" minor scale



3.) F Dorian mode



Scale Patterns for Practice

9.) A Major:

Eb Inst.

1.) Pentatonic Major Scale

opt. 8va down

2.) The "Blues" Major Scale

3.) A Major Scale

10.) C Major:

1.) Pentatonic Major Scale

opt. 8va down

2.) The "Blues" Major Scale

3.) C Major Scale

11.) D Major:

1.) Pentatonic Major Scale

opt. 8va down

2.) The "Blues" Major Scale

3.) D Major Scale

12.) E Major:

1.) Pentatonic Major Scale

opt. 8va up

2.) The "Blues" Major Scale

3.) E Major Scale

* = "blues" note

Note: Your teacher will tell you to play these exercises in a "rock" or "swing/blues" style and whether they should be played in "Common" or "Cut" time.

13.) F Major:

Page # 4

1.) Pentatonic Major Scale

opt. 8va up

2.) The "Blues" Major Scale

3.) F Major Scale

14.) G Major:

1.) Pentatonic Major Scale

opt. 8va up

2.) The "Blues" Major Scale

3.) G Major Scale

15.) D Dorian:

1.) Pentatonic minor scale

opt. 8va down

2.) The "blues" minor scale

3.) D Dorian mode

16.) F Dorian:

1.) Pentatonic minor scale

opt. 8va up

2.) The "blues" minor scale

3.) F Dorian mode

Scale Patterns for Practice

9.) A Major:

Fr. Hrn.

1.) Pentatonic Major Scale

2.) The "Blues" Major Scale

3.) A Major Scale

10.) C Major:

1.) Pentatonic Major Scale

2.) The "Blues" Major Scale

3.) C Major Scale

11.) D Major:

1.) Pentatonic Major Scale

2.) The "Blues" Major Scale

3.) D Major Scale

12.) E Major:

1.) Pentatonic Major Scale

2.) The "Blues" Major Scale

3.) E Major Scale

* = "blues" note

Note: Your teacher will tell you to play these exercises in a "rock" or "swing/blues" style and whether they should be played in "Common" or "Cut" time.

13.) F Major:

1.) Pentatonic Major Scale

2.) The "Blues" Major Scale

3.) F Major Scale

14.) G Major:

1.) Pentatonic Major Scale

2.) The "Blues" Major Scale

3.) G Major Scale

15.) D Dorian:

1.) Pentatonic minor scale

2.) The "blues" minor scale

3.) D Dorian mode

16.) F Dorian:

1.) Pentatonic minor scale

2.) The "blues" minor scale

3.) F Dorian mode

Scale Patterns for Practice

Note: Your teacher will tell you to play these exercises in a "rock" or "swing/blues" style and whether they should be played in "Common" or "Cut" time.

9.) A Major:

Viola

1.) Pentatonic Major Scale

2.) The "Blues" Major Scale

3.) A Major Scale

10.) C Major:

1.) Pentatonic Major Scale

2.) The "Blues" Major Scale

3.) C Major Scale

11.) D Major:

1.) Pentatonic Major Scale

2.) The "Blues" Major Scale

3.) D Major Scale

12.) E Major:

1.) Pentatonic Major Scale

2.) The "Blues" Major Scale

3.) E Major Scale

* = "blues" note

13.) F Major:

1.) Pentatonic Major Scale

opt. 8va up

2.) The "Blues" Major Scale

3.) F Major Scale

14.) G Major:

1.) Pentatonic Major Scale

2.) The "Blues" Major Scale

3.) G Major Scale

15.) D Dorian:

1.) Pentatonic minor scale

2.) The "blues" minor scale

3.) D Dorian mode

16.) F Dorian:

1.) Pentatonic minor scale

opt. 8va up

2.) The "blues" minor scale

3.) F Dorian mode