

# Scale Patterns for Practice

## 1.) G# minor:

Bb High

1.) Pentatonic minor scale

2.) The "blues" minor scale

3.) G# minor scale

## 2.) A minor:

1.) Pentatonic minor scale

2.) The "blues" minor scale

3.) A minor scale

## 3.) B minor:

1.) Pentatonic minor scale

2.) The "blues" minor scale

3.) B minor scale

## 4.) C minor:

1.) Pentatonic minor scale

2.) The "blues" minor scale

3.) C minor scale

\* = "blues" note

Note: Your teacher will tell you to play these exercises in a "rock" or "swing/blues" style and whether they should be played in "Common" or "Cut" time.

## 5.) C# minor:

1.) Pentatonic minor scale

2.) The "blues" minor scale

3.) C# minor scale

## 6.) D minor:

1.) Pentatonic minor scale

2.) The "blues" minor scale

3.) D minor scale

## 7.) E minor:

1.) Pentatonic minor scale

2.) The "blues" minor scale

3.) E minor scale

## 8.) F minor:

1.) Pentatonic minor scale

2.) The "blues" minor scale

3.) F minor scale

# Scale Patterns for Practice

## 1.) G# minor:

Bb Low

### 1.) Pentatonic minor scale



### 2.) The "blues" minor scale



### 3.) G# minor scale



## 2.) A minor:

### 1.) Pentatonic minor scale



### 2.) The "blues" minor scale



### 3.) A minor scale



## 3.) B minor:

### 1.) Pentatonic minor scale



### 2.) The "blues" minor scale



### 3.) B minor scale



## 4.) C minor:

### 1.) Pentatonic minor scale



### 2.) The "blues" minor scale



### 3.) C minor scale



\* = "blues" note

Note: Your teacher will tell you to play these exercises in a "rock" or "swing/blues" style and whether they should be played in "Common" or "Cut" time.

## 5.) C# minor:

Page # 2

### 1.) Pentatonic minor scale



### 2.) The "blues" minor scale



### 3.) C# minor scale



## 6.) D minor:

From here to bottom opt. 8va down.

### 1.) Pentatonic minor scale



### 2.) The "blues" minor scale



### 3.) D minor scale



## 7.) E minor:

### 1.) Pentatonic minor scale



### 2.) The "blues" minor scale

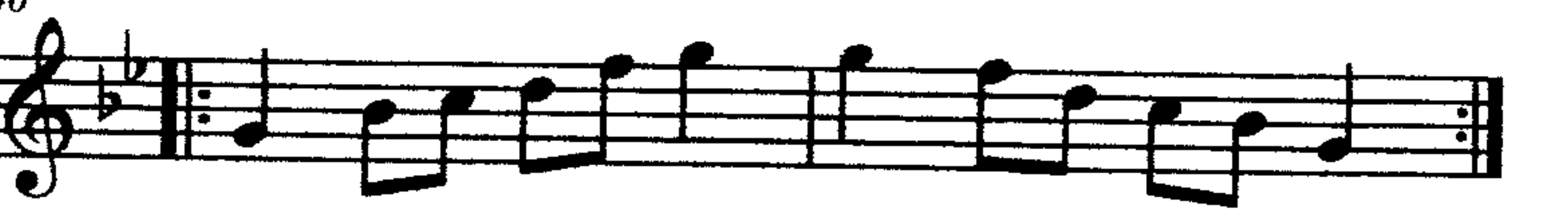


### 3.) E minor scale



## 8.) F minor:

### 1.) Pentatonic minor scale



### 2.) The "blues" minor scale



### 3.) F minor scale





# Scale Patterns for Practice

## 1.) Ab minor:

Bass Clef High

1.) Pentatonic minor scale  
opt. 8va up



2.) The "blues" minor scale



3.) Ab minor scale

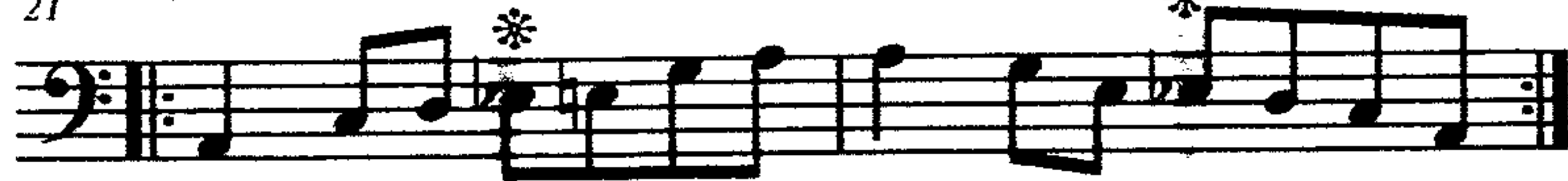


## 2.) A minor:

1.) Pentatonic minor scale



2.) The "blues" minor scale



3.) A minor scale



## 3.) B minor:

1.) Pentatonic minor scale



2.) The "blues" minor scale



3.) B minor scale



## 4.) C minor:

1.) Pentatonic minor scale



2.) The "blues" minor scale



3.) C minor scale



\* = "blues" note

Note: Your teacher will tell you to play these exercises in a "rock" or "swing/blues" style and whether they should be played in "Common" or "Cut" time.

## 5.) C# minor:

1.) Pentatonic minor scale



2.) The "blues" minor scale

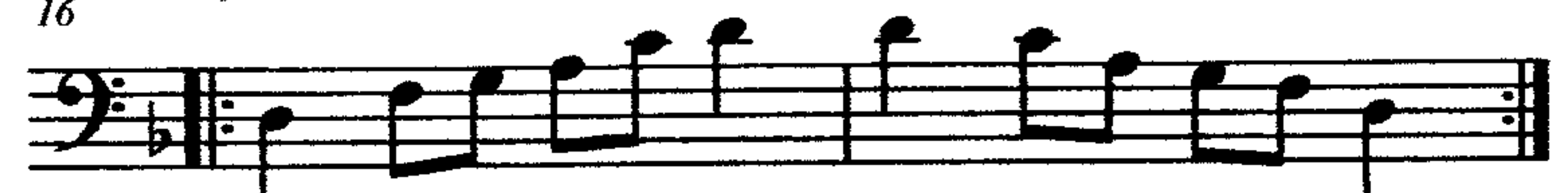


3.) C# minor scale



## 6.) D minor:

1.) Pentatonic minor scale



2.) The "blues" minor scale



3.) D minor scale



## 7.) E minor:

1.) Pentatonic minor scale



2.) The "blues" minor scale



3.) E minor scale



## 8.) F minor:

1.) Pentatonic minor scale



2.) The "blues" minor scale



3.) F minor scale



# Scale Patterns for Practice

## 1.) Ab minor:

Bass Clef Low

### 1.) Pentatonic minor scale

### 2.) The "blues" minor scale

### 3.) Ab minor scale

## 2.) A minor:

### 1.) Pentatonic minor scale

### 2.) The "blues" minor scale

### 3.) A minor scale

## 3.) B minor:

### 1.) Pentatonic minor scale

### 2.) The "blues" minor scale

### 3.) B minor scale

## 4.) C minor:

### 1.) Pentatonic minor scale

### 2.) The "blues" minor scale

### 3.) C minor scale

\* = "blues" note

Note: Your teacher will tell you to play these exercises in a "rock" or "swing/blues" style and whether they should be played in "Common" or "Cut" time.

## 5.) C# minor:

Page # 2

### 1.) Pentatonic minor scale

### 2.) The "blues" minor scale

### 3.) C# minor scale

## 6.) D minor:

### 1.) Pentatonic minor scale

### 2.) The "blues" minor scale

### 3.) D minor scale

## 7.) E minor:

### 1.) Pentatonic minor scale

### 2.) The "blues" minor scale

### 3.) E minor scale

## 8.) F minor:

### 1.) Pentatonic minor scale

### 2.) The "blues" minor scale

### 3.) F minor scale



# Scale Patterns for Practice

## 1.) G# minor:

C Inst.

### 1.) Pentatonic minor scale



### 2.) The "blues" minor scale



### 3.) G# minor scale



## 2.) A minor:

### 1.) Pentatonic minor scale



### 2.) The "blues" minor scale



### 3.) A minor scale



## 3.) B minor:

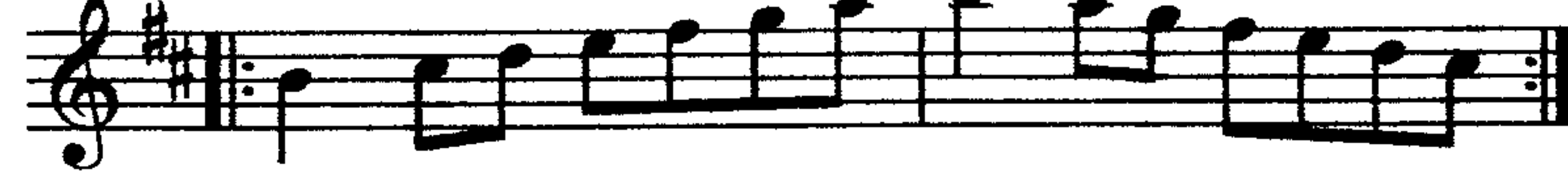
### 1.) Pentatonic minor scale



### 2.) The "blues" minor scale



### 3.) B minor scale



## 4.) C minor:

### 1.) Pentatonic minor scale



### 2.) The "blues" minor scale



### 3.) C minor scale



\* = "blues" note

Note: Your teacher will tell you to play these exercises in a "rock" or "swing/blues" style and whether they should be played in "Common" or "Cut" time.

## 5.) C# minor:

Page # 2

### 1.) Pentatonic minor scale



### 2.) The "blues" minor scale



### 3.) C# minor scale



## 6.) D minor:

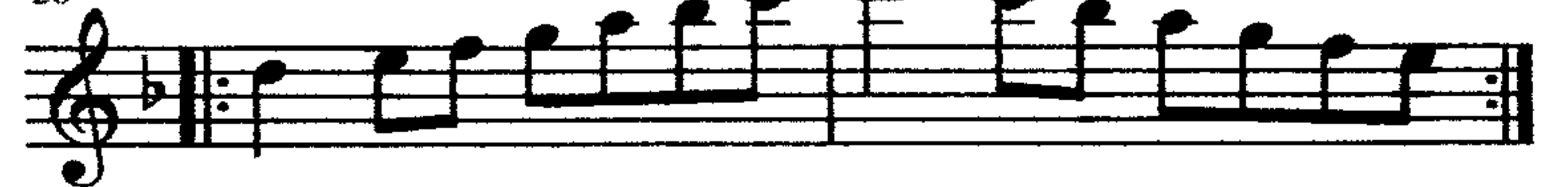
### 1.) Pentatonic minor scale



### 2.) The "blues" minor scale



### 3.) D minor scale



## 7.) E minor:

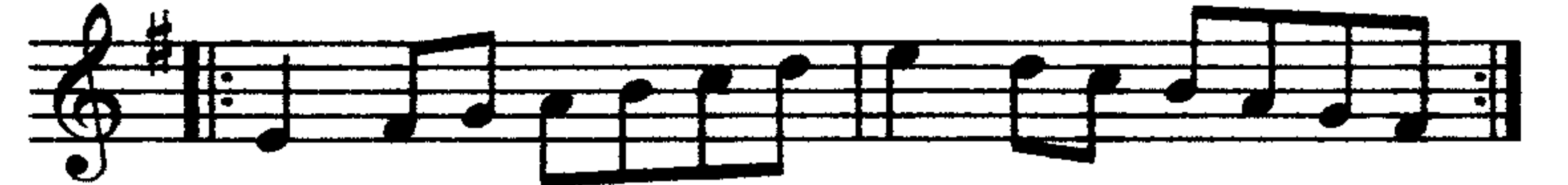
### 1.) Pentatonic minor scale



### 2.) The "blues" minor scale



### 3.) E minor scale

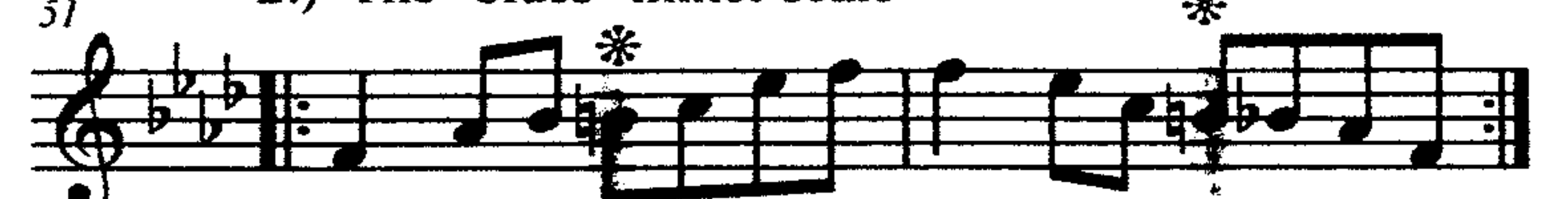


## 8.) F minor:

### 1.) Pentatonic minor scale



### 2.) The "blues" minor scale



### 3.) F minor scale



# Scale Patterns for Practice

## 1.) Ab minor:

Eb Inst.

### 1.) Pentatonic minor scale

opt. 8va down

### 2.) The "blues" minor scale

### 3.) G# minor scale

## 2.) A minor:

### 1.) Pentatonic minor scale

opt. 8va down

### 2.) The "blues" minor scale

### 3.) A minor scale

## 3.) B minor:

### 1.) Pentatonic minor scale

opt. 8va down

### 2.) The "blues" minor scale

### 3.) B minor scale

## 4.) C minor:

### 1.) Pentatonic minor scale

opt. 8va down

### 2.) The "blues" minor scale

### 3.) C minor scale

\* = "blues" note

Note: Your teacher will tell you to play these exercises in a "rock" or "swing/blues" style and whether they should be played in "Common" or "Cut" time.

## 5.) Db minor:

### 1.) Pentatonic minor scale

opt. 8va down

### 2.) The "blues" minor scale

### 3.) Db minor scale

## 6.) D minor:

### 1.) Pentatonic minor scale

opt. 8va down

### 2.) The "blues" minor scale

### 3.) D minor scale

## 7.) E minor:

### 1.) Pentatonic minor scale

opt. 8va down

### 2.) The "blues" minor scale

### 3.) E minor scale

## 8.) F minor:

### 1.) Pentatonic minor scale

opt. 8va up

### 2.) The "blues" minor scale

### 3.) F minor scale



# Scale Patterns for Practice

Note: Your teacher will tell you to play these exercises in a "rock" or "swing/blues" style and whether they should be played in "Common" or "Cut" time.

## 1.) G# minor:

Fr. Hrn.

### 1.) Pentatonic minor scale

### 2.) The "blues" minor scale

### 3.) G# minor scale

## 2.) A minor:

### 1.) Pentatonic minor scale

opt. 8va down

### 2.) The "blues" minor scale

### 3.) A minor scale

## 3.) B minor:

### 1.) Pentatonic minor scale

opt. 8va down

### 2.) The "blues" minor scale

### 3.) B minor scale

## 4.) C minor:

### 1.) Pentatonic minor scale

opt. 8va down

### 2.) The "blues" minor scale

### 3.) C minor scale

\* = "blues" note

## 5.) C# minor:

Page # 2

### 1.) Pentatonic minor scale

opt. 8va up

### 2.) The "blues" minor scale

### 3.) C# minor scale

## 6.) D minor:

### 1.) Pentatonic minor scale

opt. 8va up

### 2.) The "blues" minor scale

### 3.) D minor scale

## 7.) E minor:

### 1.) Pentatonic minor scale

### 2.) The "blues" minor scale

### 3.) E minor scale

## 8.) F minor:

### 1.) Pentatonic minor scale

### 2.) The "blues" minor scale

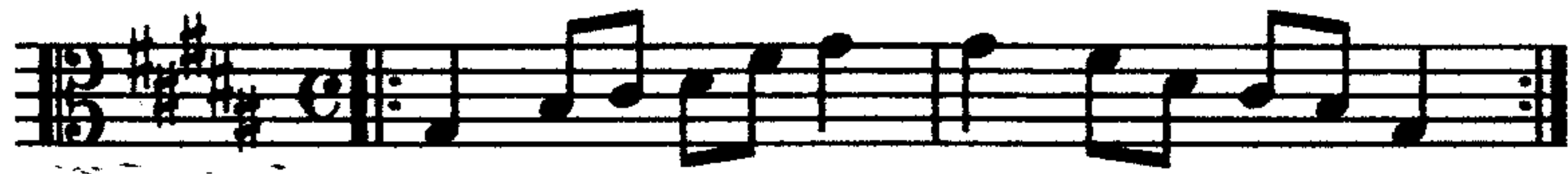
### 3.) F minor scale

# Scale Patterns for Practice

## 1.) G# minor:

Viola

### 1.) Pentatonic minor scale



### 2.) The "blues" minor scale

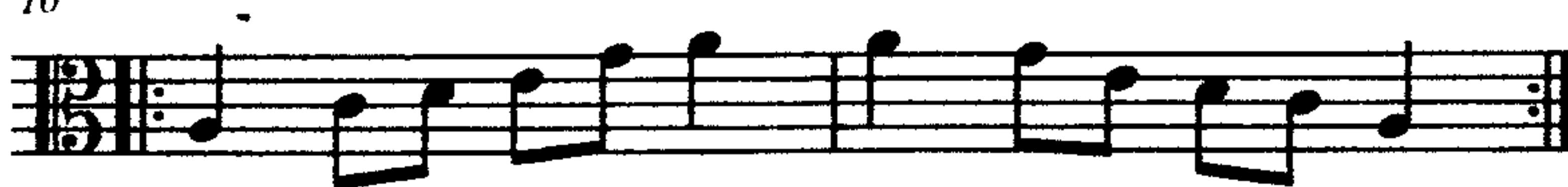


### 3.) G# minor scale

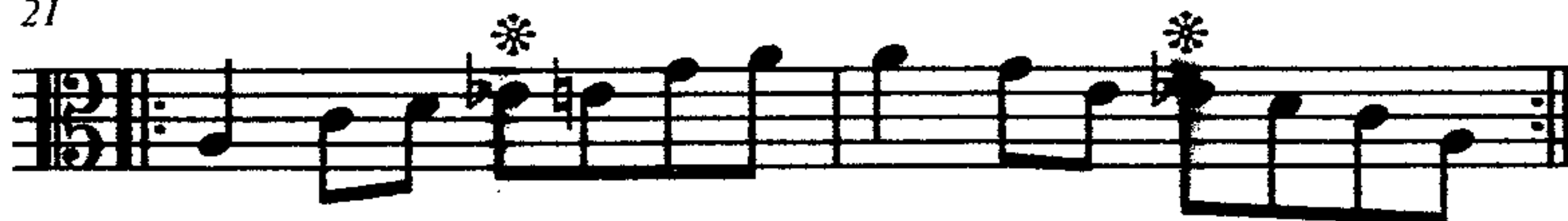


## 2.) A minor:

### 1.) Pentatonic minor scale



### 2.) The "blues" minor scale



### 3.) A minor scale



## 3.) B minor:

### 1.) Pentatonic minor scale



### 2.) The "blues" minor scale



### 3.) B minor scale



## 4.) C minor:

### 1.) Pentatonic minor scale



### 2.) The "blues" minor scale



### 3.) C minor scale



\* = "blues" note

Note: Your teacher will tell you to play these exercises in a "rock" or "swing/blues" style and whether they should be played in "Common" or "Cut" time.

## 5.) C# minor:

Page # 2

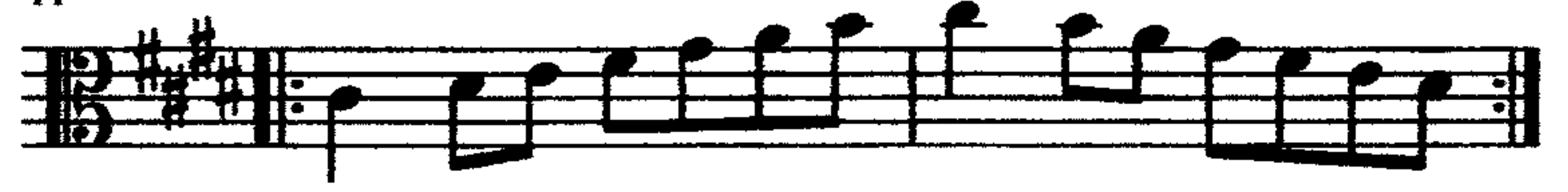
### 1.) Pentatonic minor scale



### 2.) The "blues" minor scale

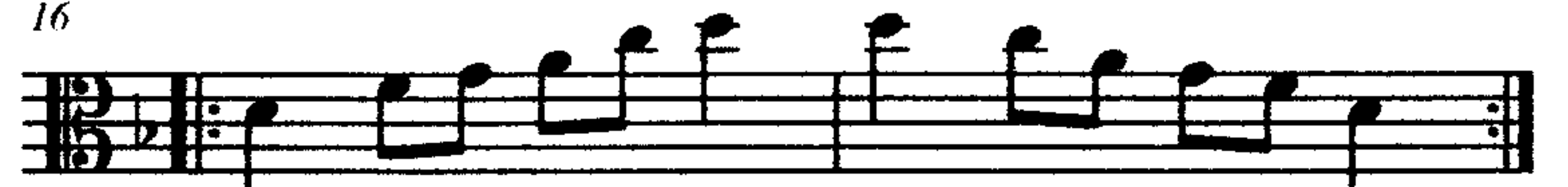


### 3.) C# minor scale



## 6.) D minor:

### 1.) Pentatonic minor scale



### 2.) The "blues" minor scale



### 3.) D minor scale



## 7.) E minor:

### 1.) Pentatonic minor scale



### 2.) The "blues" minor scale



### 3.) E minor scale



## 8.) F minor:

### 1.) Pentatonic minor scale



### 2.) The "blues" minor scale



### 3.) F minor scale

