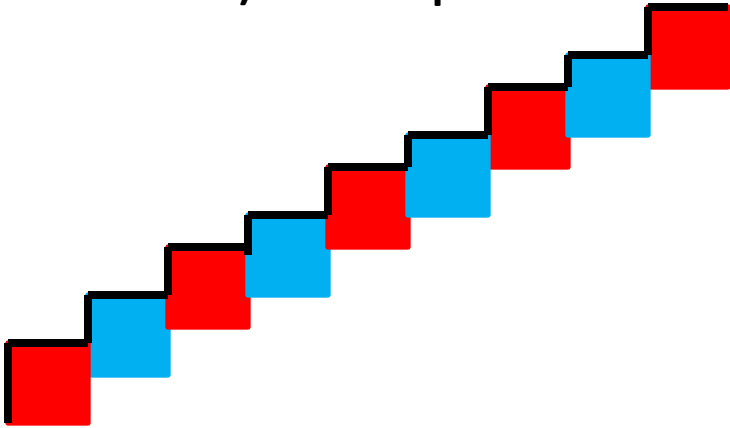
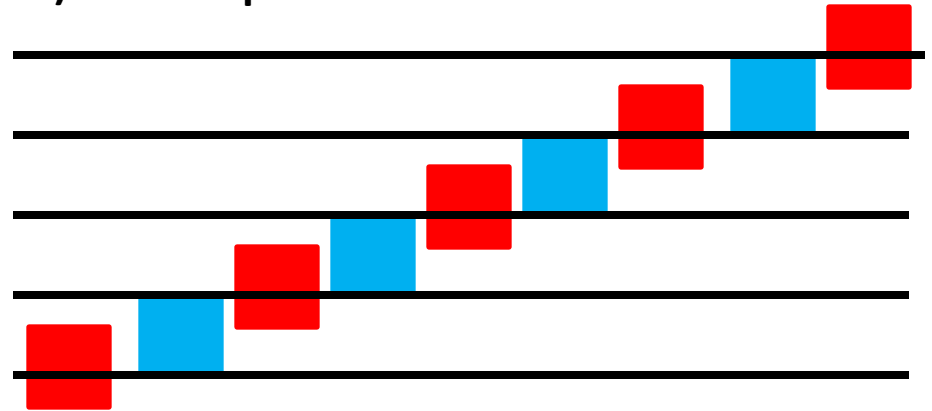


Rule #1: "Must go up and down the steps (or Staff) WITHOUT Skipping over any steps."

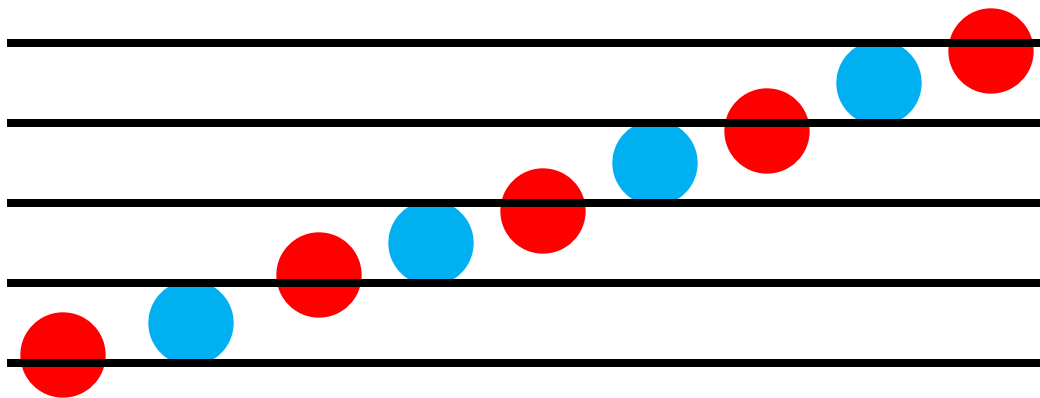
1.) The "Steps"



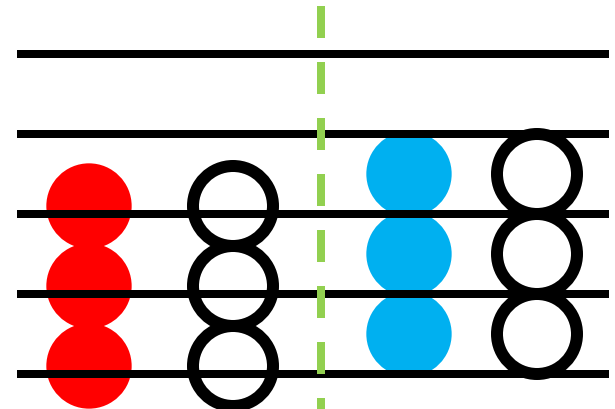
2.) The "steps" on a "staff"



3.) Notes on a "staff"



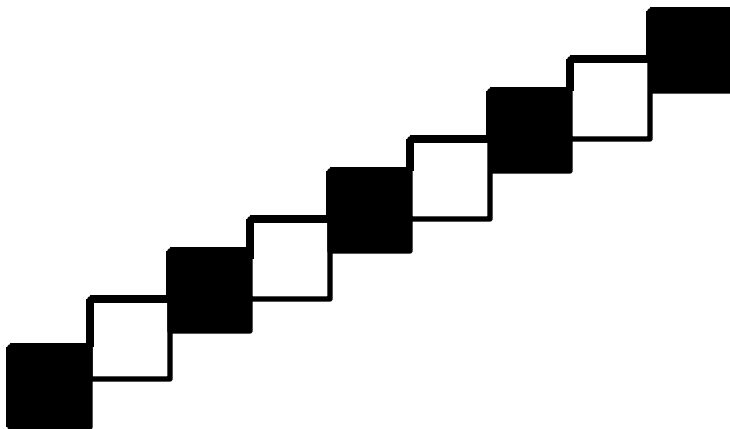
4.) "Chords" on a "staff"



Chord on
Lines

Chord on
Spaces

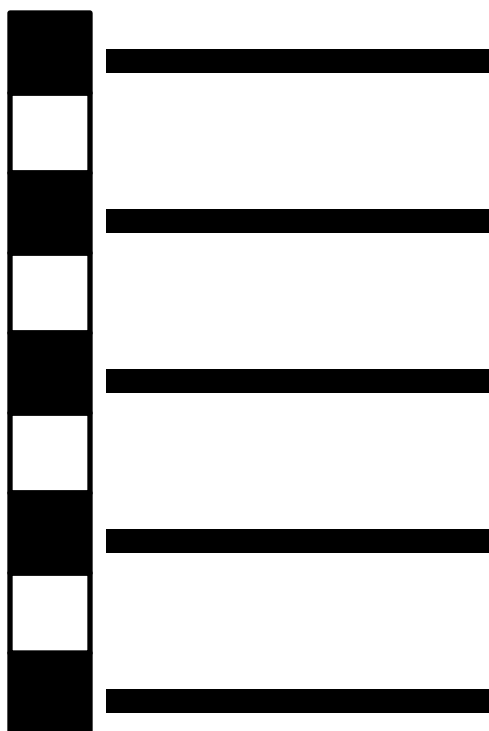
5.) The Black & White “Staff” Steps



6.) Changing the “steps” into a “ladder”.

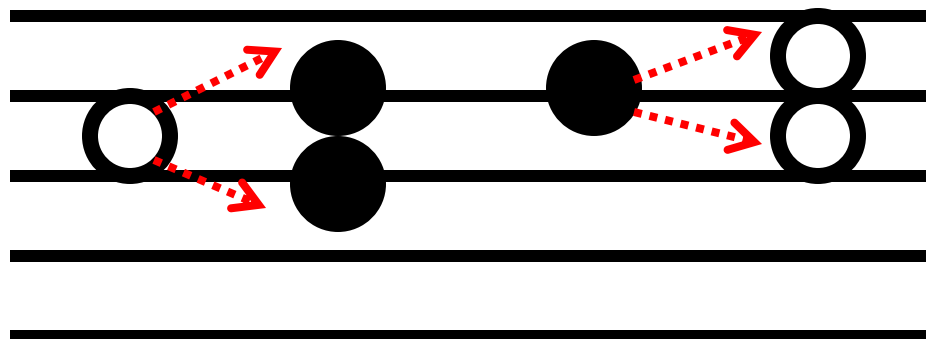


7.) Changing the “ladder” into a “staff”.



8.) Fixing “notes” that sound “bad”.

If you stop on a white note (a “space”) go up or down the “ladder” or “staff” to the next black note (or “line”).
If you stop on a black note (a “line”) go up or down to the next white note (or “space”).



9.) The Black & White "Key" Steps

